

# STATE OF OHIO DEPARTMENT OF HIGHWAYS ALUM CREEK DRIVE EXTENSION SECTION 'A' PART VILLAGE OF OBETZ HAMILTON AND MADISON TOWNSHIPS

FRANKLIN COUNTY OHIO

OHIO PROJECT  
DS-1206 (8)  
S-1206 (4)

FED. DIV.	STATE	PROJECT
2	OHIO	DS-1206 (8) S-1206 (4)

106

FRANKLIN COUNTY  
COUNTY ROAD No. 122

## CONVENTIONAL SIGNS

COUNTY LINE  
TOWNSHIP LINE  
SECTION LINE  
CENTER LINE  
GUARD RAIL  
RAILROADS  
POWER POLES  
TELEPHONE POLES  
TREES TO BE REMOVED  
FENCE LINE



TITLE SHEET	1	SUPERELEVATION TABLES	66-67
TYPICAL SECTIONS	2-3	SPECIAL DETAILS	68-69
GENERAL NOTES	4	INTERSECTION DETAILS	70-72
LOCATION PLAN	5	ROAD ROAD APPROACH	73-78
SUB-SUMMARIES	6-7	TOY ROAD APPROACH	79-81
CALCULATIONS	8	BIXBY ROAD APPROACH	82-85
FINAL SUMMARY	9-10	RATHMELL ROAD APPROACH	86-89
PLAN AND PROFILE	11-25	STRUCTURES OVER 20' SPAN	90-99
CROSS SECTIONS	26-65	RIGHT-OF-WAY PLANS	100-106

## INDEX OF SHEETS

LINE DATA  
BEGIN PROJECT DS-1206 (8) STA. 0+21  
END PROJECT DS-1206 (8) STA. 15+00  
NO ADDITIONS OR DEDUCTIONS

NET LENGTH OF PROJECT DS-1206 (8) = 7,479.00 LIN. FT. OR 1.416 MILES

ADD FOR ROHR ROAD APPROACH 1,055.09 LIN. FT.

NET LENGTH OF WORK DS-1206 (8) 7,479.00 + 1,055.09 = 8,534.09 LIN. FT. OR 1.616 MILES

BEGIN PROJECT S-1206 (4) STA. 15+00  
END PROJECT S-1206 (4) STA. 142+04  
NO ADDITIONS OR DEDUCTIONS

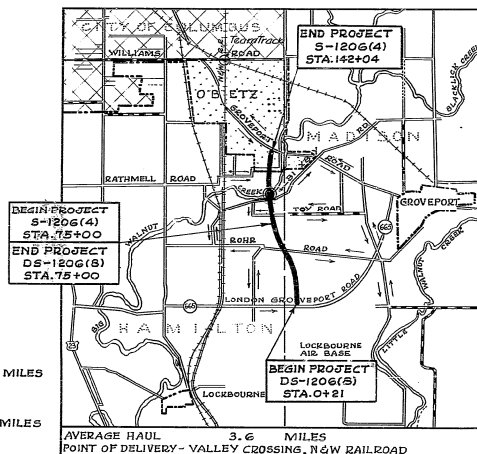
NET LENGTH OF PROJECT S-1206 (4) = 6,704.00 LIN. FT. OR 1.269 MILES

ADD FOR TOY ROAD APPROACH 947.00 LIN. FT.  
ADD FOR BIXBY ROAD APPROACH 671.11 LIN. FT.  
ADD FOR RATHMELL ROAD APPROACH 969.00 LIN. FT.

NET LENGTH OF WORK S-1206 (4) 6,704.00 + 947.00 + 671.11 + 969.00 = 9,291.11 LIN. FT. OR 1.759 MILES

TOTAL LENGTH OF PROJECT DS-1206 (8) & S-1206 (4) 7,479.00 + 6,704.00 = 14,183.00 LIN. FT. OR 2.686 MILES

TOTAL LENGTH OF WORK DS-1206 (8) & S-1206 (4) 8,534.09 + 9,291.11 = 17,825.20 LIN. FT. OR 3.375 MILES



## LOCATION MAP

SCALE 1"=1 MILE

PORTION TO BE IMPROVED  
FEDERAL HIGHWAYS  
STATE HIGHWAYS  
COUNTY ROADS  
DETOURS SHOWN THUS

## SCALES

PLAN  
PROFILE -- HORIZONTAL  
PROFILE -- VERTICAL  
CROSS SECTIONS  
CROSS SECTIONS

1"=50'  
1"=50'  
1"=5'  
1"=5'  
1"=10'

SUPPLEMENTAL PRINTS OF STANDARD CONSTRUCTION DRAWINGS			
21-1	7-15-58	6-1-50	4-1-50
L-1	4-1-50	1-8-M.H.N.S.	5-1-52
DE-1	1-3-55	1-8-M.H.N.S.	1-3-55
S-21	3-15-48	1-8-M.H.N.S.	1-3-55
S-21	3-15-48	1-8-M.H.N.S.	1-3-55
S-21	3-15-48	1-8-M.H.N.S.	1-3-55
S-21	3-15-48	1-8-M.H.N.S.	1-3-55
S-21	3-15-48	1-8-M.H.N.S.	1-3-55
S-21	3-15-48	1-8-M.H.N.S.	1-3-55
S-21	3-15-48	1-8-M.H.N.S.	1-3-55

SUPPLEMENTAL SPECIFICATIONS	
E-101	1-1-57
B-119	8-11-57
B-219	7-23-58
S-206 (8)	5-25-56
S-206 (8)	6-22-58
S-206 (8)	4-1-58

We, the Commissioners of Franklin County, in formal session hereby approve these plans and certify that the necessary right-of-way is available. We agree to maintain the project in a manner satisfactory to the Director of Highways, State of Ohio, or his duly authorized representatives and will make ample provisions each year for such maintenance.

Done under authority of sections 5555.02 et. seq. and 5555.01 et. seq. of the Revised Code of Ohio.

## BOARD OF COMMISSIONERS - FRANKLIN COUNTY

*Harry T. Vigna*  
*Henry County*  
Date *9-25-58* *Frederick B. Berkheimer*

The Standard Specifications of the State of Ohio, Department of Highways including changes and supplemental specifications listed in the proposal shall govern this improvement. I hereby approve these plans and declare that the making of this improvement will not require the closing of the highway to traffic, except as noted on Sheet No. 4, and that provisions for the maintenance and safety of traffic will be as set forth on the plans and estimates.

APPROVED  
Date *8-27-58* FRANKLIN COUNTY DEPUTY ENGINEER  
*Dug Elbin*  
APPROVED  
Date *8-27-58* FRANKLIN COUNTY ENGINEER  
*Frederick B. Berkheimer*  
APPROVED  
Date *2-2-58* DIVISION DEPUTY DIRECTOR  
*Frederick B. Berkheimer*  
APPROVED  
Date *9-23-58* DEPUTY DIRECTOR OF PLANNING AND PROGRAMMING  
*D. H. Overman*  
APPROVED  
Date *9-18-58* ENGINEER OF BRIDGES  
*Frederick B. Berkheimer*  
APPROVED  
Date *9-20-58* ENGINEER OF LOCATION AND DESIGN  
*Frederick B. Berkheimer*  
APPROVED  
Date *9-24-58* DEPUTY DIRECTOR OF DESIGN AND CONSTRUCTION  
*Frederick B. Berkheimer*  
APPROVED  
Date *9-23-58* FIRST ASSISTANT DIRECTOR  
*Frederick B. Berkheimer*  
APPROVED  
Date *9/24/58* DIRECTOR OF HIGHWAYS  
*Frederick B. Berkheimer*

NOV 1958  
GROUND PHOTOGRAPH

DEPARTMENT OF COMMERCE  
BUREAU OF PUBLIC ROADS

APPROVED

DIVISION ENGINEER DATE

FILE NO.	FRANKLIN CO. COUNTY ROAD No. 122
DATE OF LETTING	195
CONTRACT NO.	



3

① 2" Asphaltic Concrete Surface Course Type A (70-85)	Item T-35
② Bituminous Prime Coat, using Sec. M-5.1, 2T-2 or 2T-3, or Sec. M-5.3, MC-0 or MC-1, applied at the rate of 0.35 gal. per Sq. Yd.	Item T-30
③ 9" Crushed Aggregate Base Course	Item B-119
④ Roadway Drainage or Storm Sewers	
⑤ Seeding and Protecting Roadway Area	Item L-9
⑥ Stone Underdrains №2	Item T-

# ROHR ROAD	10'-0" to 8'-0"
# TOY ROAD	10'-0" to 6'-0"
# BIXBY ROAD	10'-0" to 8'-0"
# RATHMELL ROAD	10'-0" to 8'-0"

0060	010	Typical Section										1958	0030	010
------	-----	-----------------	--	--	--	--	--	--	--	--	--	------	------	-----





# LOCATION PLAN ALUM CREEK DRIVE EXTENSION SECTION "A" PART-COUNTY ROAD NO. 122 VILLAGE OF OBETZ HAMILTON AND MADISON TOWNSHIP

## PROPOSED CURVE DATA

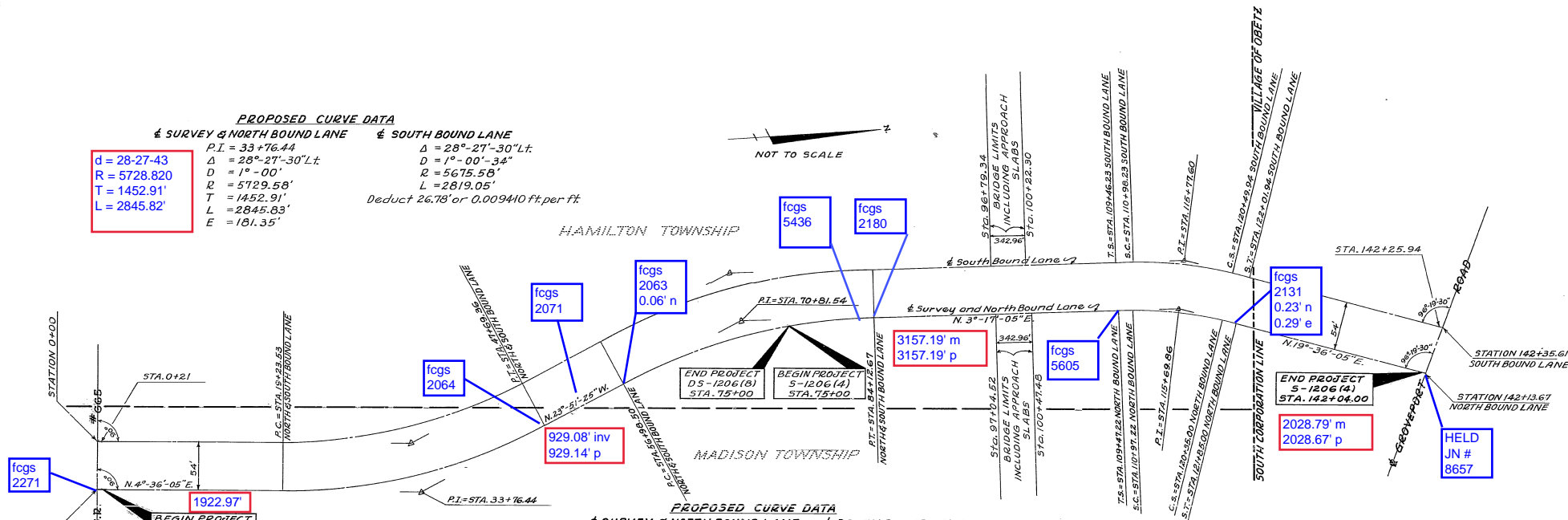
### SURVEY & NORTH BOUND LANE S SOUTH BOUND LANE

$d = 28-27-43$   
 $R = 5728.820$   
 $T = 1452.91'$   
 $L = 2845.82'$

$PI = 33+76.44$   
 $\Delta = 28^{\circ}-27'-30''$   
 $D = 1^{\circ}-00'$   
 $R = 5729.58'$   
 $T = 1452.91'$   
 $L = 2845.83'$   
 $E = 181.35'$   
 $\Delta = 28^{\circ}-27'-30''$   
 $D = 1^{\circ}-00'-34''$   
 $R = 5675.58'$   
 $L = 2819.05'$   
Deduct 26.78' or 0.009410 ft. per ft.

Deduct 26.78' or 0.009410 ft. per ft.

NOT TO SCALE



## PROPOSED CURVE DATA

### SURVEY & NORTH BOUND LANE S SOUTH BOUND LANE

$d = 27-08-37$   
 $R = 5729.1669$   
 $T = 1383.05'$   
 $L = 2714.17'$

$PI = 34+70+81.54$   
 $\Delta = 27^{\circ}-08'-30''$   
 $D = 27^{\circ}-08'-30''$   
 $D = 1^{\circ}-00'$   
 $R = 5729.58'$   
 $T = 1383.04'$   
 $L = 2714.17'$   
 $E = 164.55'$   
 $\Delta = 27^{\circ}-08'-30''$   
 $D = 0^{\circ}-59'-27''$   
 $R = 5783.58'$   
 $L = 2739.65'$

Add 25.48' or 0.009388 ft. per ft.

NOTE: Length of 1°-00' Curve on South Bound Lane  
From Sta. 56+98.50 to Sta. 75+00 = 1,818.41'  
Sta. 75+00.00 - 56+98.50 = 1801.50'  
 $1801.50 \times 0.009388 = 16.91'$   
TOTAL 1818.41'

NOTE: Superelevation Tables for 1°-00' Curves  
Sta. 19+23.53 to Sta. 47+69.36 and Sta. 56+98.50  
to Sta. 84+12.67 on South Bound Lane are based  
on radial sta. from S of Survey and North  
Bound Lane.

## PROPOSED CURVE DATA

### SURVEY & NORTH BOUND LANE S SOUTH BOUND LANE

$PI = 34+115+69.86$   
 $\Delta = 16^{\circ}-19'-12''$   
 $D = 1^{\circ}-30'$   
 $R = 3819.72'$   
 $Ls = 150'$   
 $Ts = 622.64'$   
 $Es = 39.35'$   
 $Yc = 0.98$   
 $Xc = 149.99$   
 $L.S.C. = 937.78$   
 $\Theta_s = 1^{\circ}-07'-30''$   
 $PI = 34+115+71.60$   
 $\Delta = 16^{\circ}-19'-12''$   
 $D = 1^{\circ}-28'-45''$   
 $R = 3873.72'$   
 $Ls = 152.00$   
 $Ts = 631.37'$   
 $Es = 39.86'$   
 $Yc = 0.99$   
 $Xc = 151.99'$   
 $L.S.C. = 951.71'$   
 $\Theta_s = 1^{\circ}-07'-12''$

HELD  
SPIRAL

SUB - SUMMARY  
DS - 1206(8)

FED. RD. DIVISION	STATE	PROJECT	
2	OHIO		

FRANKLIN COUNTY  
COUNTY ROAD N°122

6

[illegible]

# SUB-SUMMARY S-1206 (4)

FED. RD. DIVISION	STATE	PROJECT
2	OHIO	

FRANKLIN COUNTY  
COUNTY ROAD #122

7

ITEM No	DESCRIPTION UNIT	SHEET NUMBERS										TOTAL
		4	8	18	19	20	21	22	23	24	25	
E-101	Excavation Cu Yds			6,281	13,559	10,058	6,071	1,771	774	1,634		44,485
E-101	Comp. Subgrade Cu Yds			2,591	6,019	4,653	5,169	5,686	6,207	1,341		43,763
E-4	Borrow Cu Yds	203,926										203,926
E-9	Trees & Stumps Each											
E-11	Water M.Gals		1238.9									1,238.9
L-9	Seeding Tons			4,528	8,463	5,182	16,425	14,820	14,325	15,300		94,734
L-9	Fertilizer Tons			0.43	0.76	0.74	1.70	1.33	1.02	1.38		8.96
L-10	Soeding Sg. Yds	325						280			428	1,053
I-18	Shield Approach Cu Yds		48	152.5	244.5	190	262	320.5	277			1,935.5
I-15	Guard Rail Lin. Ft.			42.16	97.93	92.40	1,900					2,292.16
I-15	Removed Stone Lin. Ft.											50
T-10	Surface Course Cu Yds	100										100
M-10	Calcium Chloride Tons	2		0.91	1.67	1.10	1.90	1.83	1.66			13.46
Special	Mixing Calcium Chloride Sg. Yds			853	1,594	1,069	1,714	1,443	1,573			10,864
F-2	Structure Excav Cu Yds							2				27
F-3	Channel Excav Cu Yds											853
F-12	15' Remove Stone Lin. Ft.											22
E-12	12' Removed Lin. Ft.											40
I-1	12' For Driveways Lin. Ft.			64				56				196
I-1	12' M-6.4(c) Lin. Ft.											100
I-1	15' For Driveways Lin. Ft.											32
I-2	6' Class B U.P. Lin. Ft.				48							48
I-2	12' Class B U.P. Lin. Ft.				108							88
I-2	15' Class B U.P. Lin. Ft.				108	312						88
I-2	18' Class B U.P. Lin. Ft.							80	156			48
I-2	15' Class B 3/4 Sew. Lin. Ft.											106
I-2	12' M-6.4(c) Lin. Ft.			10	10			10				40
I-2	15' M-6.4(c) Lin. Ft.							10				20
I-2	48' M-6.6(c) U.P. Lin. Ft.			32	148							180
I-2	54' M-6.6(c) U.P. Lin. Ft.			146	280							120
I-2	48' M-6.6(c) Lin. Ft.			420	460							745
I-2	54' M-6.6(c) Lin. Ft.			148	166							880
I-2	18' M-6.6(c) U.P. Lin. Ft.											314
I-2	54' M-10.6(c) U.P. Lin. Ft.			32								180
I-3	6' M-6.7(b) Lin. Ft.	50										32
I-3	8' M-6.7(b) Lin. Ft.	50										50
I-3	10' M-6.4(c) Lin. Ft.	50										50
I-3	12' M-6.8(c) Lin. Ft.											100
I-3	24' M-6.6(c) Lin. Ft.											348
I-3	30' M-6.6(c) Lin. Ft.							300	248			548
I-3	30' M-6.6(c) U.P. Lin. Ft.								196			196
I-3	27' M-6.6(b) Lin. Ft.											344
I-3	30' M-6.6(b) Lin. Ft.							524				524
I-3	27' M-6.6(b) U.P. Lin. Ft.											32
I-3	30' M-6.6(b) U.P. Lin. Ft.							32				32
I-3	36' M-6.6(c) Lin. Ft.							896	148			1,044
I-3	36' M-10.6(c) U.P. Lin. Ft.							64				148
I-4	6' M-6.7(b) Lin. Ft.											25,194
I-4	8' M-6.4(c) Dilled Lin. Ft.			3,020	3,992	2,704	3,844	4,010	3,994			356
I-5	6'-60" Bend Each			4				2				10
I-5	6'-90" Bend Each							2				4
I-5	8"x8"x6" Tee Each			2								2
I-5	8"x6"x6" Tee Each								2			2
I-5	6"x6" Wye Each								4			4
I-8	# 2-2 A C.B. Each			1	3	3		1	4			28
I-8	# 2 M.H. Each			1	2	1	1	2	2			12
I-9	Stone Underdrain Lin. Ft.											208
I-10	Channel Protection Cu Yds			69								192
S-1	Conc. for Struct. Cu Yds			5				0.3	0.3			8.4
S-27	8' M-6.6(c) Lin. Ft.											232
T-35	Surface Cu Yds		1,417	13	28	48		13	36			1,910
B-35	Leveling Cu Yds		2,411	22	46	48		22	60			2,669
T-35	Prime Coat Gals.			113	229	237		113	299			3,208
I-22	8' Base Cu Yds		8,344	72	146	150		72	190			9,164
I-12	Type 6 Curb Lin. Ft.								68			554
B-219	3" Base Cu Yds		5,963		112	148						6,056
B-119	9" Base Cu Yds											1,505
I-7	Approach Slab Sg. Yds											268
S-3	Type C W.Proof Sg. Yds											268
I-23	Conc. Traffic Divider Each											5

FRANKLIN COUNTY

COUNTY ROAD NO.122

EARTHWORK			
SHEET N°	ROADWAY EXCAVATION CU. YDS.	EMBANKMENT CU. YDS.	EMBANKMENT + 20% CU. YDS.
DS-1206(8)			
11	8,525	19	23
12	10,590	64	77
13	19,213	0	0
14	6,263	646	775
15	1,381	6,436	7,723
16	756	7,602	9,122
17	1,077	3,547	4,256
18	1,039	1,999	1,186
19	947		2,399
TOTALS	49,791	21,251	25,501
S-1206(4)			
18	6,281	126	151
19	13,159	0	0
20	10,698	5,190	6,228
21	607	80,759	96,911
22	1,177	51,187	61,424
23	774	32,546	39,055
24	1,634	52,578	63,094
29	5,520	128	154
82	3,636	16	19
86	999	5,887	7,064
TOTALS	44,485	228,417	274,100
GR TOTALS	94,276	249,668	299,601

Embankment + 20 % - (Roadway Excavation + Channel Excavation) = Borrow.

299,601 - (94,276 + 1,399) = 203,926 Cu.Yds.

Item E-4. Borrow.

DS-1206(8)

(Roadway Excavation + Channel Excavation) -

Embankment + 20 % = Surplus Excavation

(49,791 + 544) - 25,501 = 24,834 Cu.Yds. Surplus Exc.

S-1206(4)

Embankment + 20 % - (Roadway Excavation + Channel Excavation) = Borrow.

274,100 - (44,485 + 855) = 228,760 Cu.Yds. Borrow.

228,760 Cu.Yds. Borrow - 24,834 Cu.Yds. Surplus Exc.

= 203,926 Cu.Yds. Total E-4. Borrow.

ITEM I-18 MAIL BOX APPROACHES	
DS-1206(8)	
Estimated 2 Approaches at 6 Cu. Yds. Each =	12 CU. YDS.
S-1206(4)	
Estimated 8 Approaches at 6 Cu. Yds. Each =	48 CU. YDS.
GRAND TOTAL	60 CU. YDS.

PAVEMENT CALCULATIONS	PAVEMENT CALCULATIONS CONT'D
T-35 SURFACE	I-22 BASE
<div>DS-1206(8)</div> <div>From Typical Section Sheet N° 2 = 7,469.13' + 7,479.00' = 14,948.13 Lin.Ft</div> <div>(14,948.13 x 24) ÷ 9 = 39,861.68 Sg.Yds.</div> <div>(39,861.68 x 1.50) ÷ 36 = 1,661 Cu.Yds.</div>	<div>DS-1206(8)</div> <div>From Typical Section Sheet N° 2 = 7,469.13' + 7,479.00' = 14,948.13 Lin.Ft</div> <div>(14,948.13 x 26.5) ÷ 9 = 44,013.94 Sg.Yds.</div> <div>(44,013.94 x 8) ÷ 36 = 9,781 Cu.Yds.</div>
<div>S-1206(4)</div> <div>From Typical Section Sheet N° 2 = 6,391.55' + 6,361.04' = 12,752.59 Lin.Ft</div> <div>(12,752.59 x 24) ÷ 9 = 34,006.91 Sg.Yds.</div> <div>(34,006.91 x 1.50) ÷ 36 = 1,417 Cu.Yds.</div> <div>Grand Total = 3,078 Cu.Yds.</div>	<div>S-1206(4)</div> <div>From Typical Section Sheet N° 2 = 6,391.55' + 6,361.04' = 12,752.59 Lin.Ft</div> <div>(12,752.59 x 26.5) ÷ 9 = 37,549.29 Sg.Yds.</div> <div>(37,549.29 x 8) ÷ 36 = 8,344 Cu.Yds.</div> <div>Grand Total = 18,125 Cu.Yds.</div>
B-35 LEVELING	E-11 WATER
<div>DS-1206(8)</div> <div>From Typical Section Sheet N° 2 = 7,469.13' + 7,479.00' = 14,948.13 Lin.Ft</div> <div>(14,948.13 x 24.5) ÷ 9 = 40,692.13 Sg.Yds.</div> <div>(40,692.13 x 2.5) ÷ 36 = 2,826 Cu.Yds.</div>	<div>DS-1206(8)</div> <div>Embankment = 21,251 Cu.Yds.</div> <div>B-119 = 646 Cu.Yds.</div> <div>I-18 = 2,065.5 Cu.Yds.</div> <div>I-22 = 10,284 Cu.Yds.</div> <div>Subgrade Compaction in Cuts = 7,081 Cu.Yds.</div> <div>TOTAL = 41,327.5 Cu.Yds.</div> <div>41,327.5 x 5 gal. per Cu.Yd. = 206.6 M.Gals.</div>
<div>S-1206(4)</div> <div>From Typical Section Sheet N° 2 = 6,391.55' + 6,361.04' = 12,752.59 Lin.Ft</div> <div>(12,752.59 x 24.5) ÷ 9 = 34,715.38 Sg.Yds.</div> <div>(34,715.38 x 2.5) ÷ 36 = 2,411 Cu.Yds.</div> <div>Grand Total = 5,237 Cu.Yds.</div>	<div>S-1206(4)</div> <div>Embankment = 228,417 Cu.Yds.</div> <div>B-119 = 1,505 Cu.Yds.</div> <div>I-18 = 3,402.5 Cu.Yds.</div> <div>I-22 = 9,164 Cu.Yds.</div> <div>Subgrade Compaction in Cuts = 5,293 Cu.Yds.</div> <div>Total = 247,781.5 Cu.Yds.</div> <div>247,781.5 x 5 gals per Cu.Yd. = 1,238.9 M.Gals.</div> <div>Grand Total = 1,445.5 M.Gals.</div>
B-219 BASE	
<div>DS-1206(8)</div> <div>From Typical Section Sheet N° 2 = 7,469.13' + 7,479.00' = 14,948.13 Lin.Ft</div> <div>(14,948.13 x 25) ÷ 9 = 41,522.58 Sg.Yds.</div> <div>(41,522.58 x 3) ÷ 36 = 3,460 Cu.Yds.</div>	
<div>S-1206(4)</div> <div>From Typical Section Sheet N° 2 = 6,391.55' + 6,361.04' = 12,752.59 Lin.Ft</div> <div>(12,752.59 x 25) ÷ 9 = 35,423.86 Sg.Yds.</div> <div>(35,423.86 x 3) ÷ 36 = 2,952 Cu.Yds.</div> <div>Grand Total = 6,412 Cu.Yds.</div>	
B-219 BASE	
<div>DS-1206(8)</div> <div>From Typical section Sheet N° 2 = 7,469.13' + 7,479.00' = 14,948.13 Lin.Ft</div> <div>(14,948.13 x 25.5) ÷ 9 = 42,353.04 Sg.Yds.</div> <div>(42,353.04 x 3) ÷ 36 = 3,529 Cu.Yds.</div>	
<div>S-1206(4)</div> <div>From Typical Section Sheet N° 2 = 6,391.55' + 6,361.04' = 12,752.59 Lin.Ft</div> <div>(12,752.59 x 25.5) ÷ 9 = 36,132.34 Sg.Yds.</div> <div>(36,132.34 x 3) ÷ 36 = 3,011 Cu.Yds.</div> <div>Grand Total = 6,540 Cu.Yds.</div>	



## FINAL SUMMARY, CONT'D.

FRANKLIN COUNTY  
COUNTY ROAD NO 122

ITEM No	D5-1206(8)	S-1206(4)	QUANTITY TOTAL	UNIT	TYPE CODE 6202	DESCRIPTION DRAINAGE (CONT'D.)
I-2		32	32	Lin. Ft.	54" Storm Sewers Under Pavement or Approaches, Sec. M-106.6(d).	
I-2		314	314	Lin. Ft.	54" Storm Sewers, Sec. M-106.6(d).	
I-3	50	50	100	Lin. Ft.	6" Roadway Drainage, Sec. M-6.7(b).	
I-3	50	50	100	Lin. Ft.	8" Roadway Drainage, Sec. M-6.7(b).	
I-3	50	50	100	Lin. Ft.	10" Roadway Drainage, Sec. M-6.4(a).	
I-3		100	100	Lin. Ft.	12" Roadway Drainage, Sec. M-6.5(a).	
I-3	348	348	348	Lin. Ft.	24" Roadway Drainage, Sec. M-6.6(a).	
I-3	548	548	548	Lin. Ft.	30" Roadway Drainage, Sec. M-6.6(a).	
I-3	196	196	196	Lin. Ft.	30" Roadway Drainage Under Pavement or Approaches, Sec. M-6.6(a).	
I-3	344	344	344	Lin. Ft.	27" Roadway Drainage, Sec. M-6.6(b).	
I-3	524	524	524	Lin. Ft.	30" Roadway Drainage, Sec. M-6.6(b).	
I-3	32	32	32	Lin. Ft.	27" Roadway Drainage Under Pavement or Approaches, Sec. M-6.6(b).	
I-3	32	32	32	Lin. Ft.	30" Roadway Drainage Under Pavement or Approaches, Sec. M-6.6(b).	
I-3	1,044	1,044	1,044	Lin. Ft.	36" Roadway Drainage, Sec. M-6.6(c).	
I-3		148	148	Lin. Ft.	36" Roadway Drainage, Sec. M-106.6(d).	
I-4	29,332	25,154	54,486	Lin. Ft.	6" Underdrains, Sec. M-6.7(b), as per plan.	
I-4	922	336	1,258	Lin. Ft.	8" Pipe Outlets for Underdrains, Sec. M-6.4(c).	
I-5	28	14	42	Each	6" Pipe Specials for Underdrains (Bends).	
I-5	16	4	20	Each	6" Pipe Specials for Underdrains (Wyes).	
I-5	6	4	10	Each	8" Pipe Specials for Class B Storm Sewers Under Pavement or Approaches (Tees).	
I-5	2		2	Each	8" Pipe Specials for Class B Storm Sewers Under Pavement or Approaches (Double Tees).	
I-5	1		1	Each	18" Pipe Special for Class B Storm Sewers Under Pavement or Approaches.	
I-8	27	28	55	Each	Standard No 2-2A Catch Basins.	
I-8	3		3	Each	Standard No 2-4 Catch Basins Modified, as per plan.	
I-8	1		1	Each	Standard No 1 Man Hole.	
I-8	9	12	21	Each	Standard No 2 Man Holes, without drop pipe, as per plan.	
I-9	80	208	288	Lin. Ft.	Stone Underdrains No 2.	
I-10		152	152	Cu. Yds.	Dumped Rock Channel Protection.	
S-1	3.0	8.4	11.4	Cu. Yds.	Concrete for Structures, Class "C".	
S-27	172		172	Lin. Ft.	18" Pipe for Roadway Culverts, Sec. M-6.6(b).	
S-27	324		324	Lin. Ft.	45"x29" Reinforced Elliptical Concrete Culvert Pipe, Sec. M-206.6(b), for Roadway Culverts.	
S-27		232	232	Lin. Ft.	84" Pipe for Roadway Culverts, Sec. M-6.6(c).	
T-35	1,833	1,910	3,803	Cu. Yds.	Asphaltic Concrete Surface Course, Type A (70-85).	
B-35	2,383	2,669	5,052	Cu. Yds.	Asphaltic Concrete Leveling Course (70-85).	
B-219	7,065	6,056	13,121	Cu. Yds.	Waterproofed Aggregate Base Course, Type A or B.	
B-119	646	1,505	2,151	Cu. Yds.	Crushed Aggregate Base Course.	
I-22	10,284	9,164	19,448	Cu. Yds.	Subbase, as per plan.	
T-30	1,537	3,208	4,745	Gals.	Bituminous Prime Coat, Sec. M-5.7, RT-2 or RT-3 or Sec. M-5.3, MC-0 or MC-1.	
I-12	361	554	915	Lin. Ft.	Standard Type C Concrete Curb.	
I-23		5	5	Each	Precast White Portland Cement Concrete Traffic Dividers.	
I-7		268	268	Sq. Yds.	Reinforced Concrete Approach Slabs (T=13").	
S-3		268	268	Sq. Yds.	Waterproofing, Type "C".	
						<b>PAVEMENT</b>
						<b>STRUCTURES OVER 20' SPAN</b>
						For Construction See Sheet NB-31

STRUCTURES OVER 20' SPAN  
For Quantities See Sheet No. 91

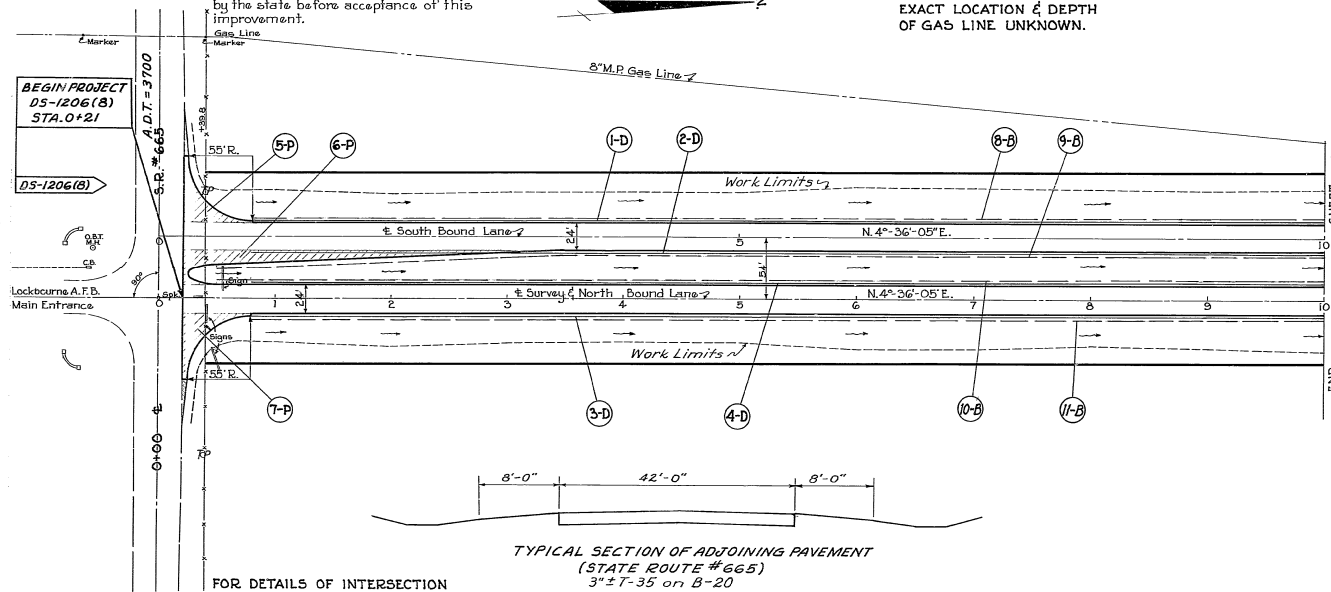
Marker will be furnished & erected on the right by the state before acceptance of this improvement.

EXACT LOCATION & DEPTH OF GAS LINE UNKNOWN.

FED. RD. DIVISION	STATE	PROJECT	
2	OHIO		

FRANKLIN COUNTY  
COUNTY ROAD #122

11



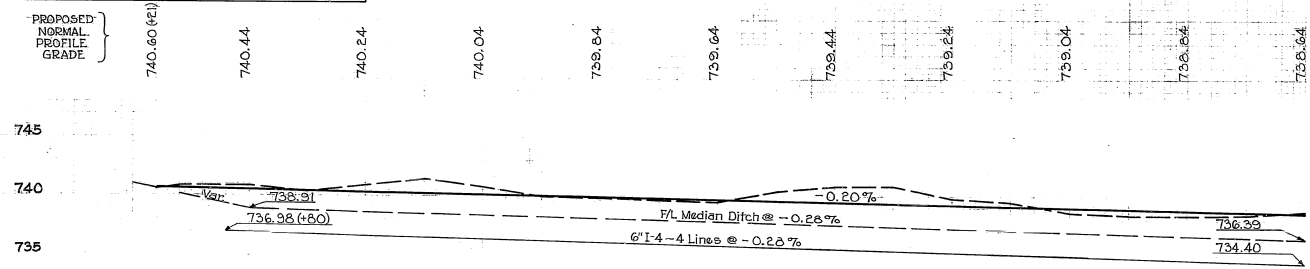
DRAINAGE & PAVEMENT																				
REF. No.	STATION	SIDE	1-4		T-35		B-35		I-22		I-12		B-219		B-219		I-18		SPECIAL MIXING C. C. STAB. 3"	M-10 CALCIUM CHLORIDE
			M-6.7b	1 1/2"	1 1/2"	2 1/2"	8"	6"	8"	6"	3"	3"	3"	3"	3"	3"	3"	3"		
			LIN. FT.		SURFACE		LEVELING		SUB BASE		CURB		BASE		BASE		SHOULDR.			
			6"		CU. YDS.		CU. YDS.		CU. YDS.		LIN. FT.		CU. YDS.		CU. YDS.		CU. YDS.		SQ. YDS.	
1-D	0+80	10+00	LT.	920																
2-D	0+80	10+00	LT.	920																
3-D	0+80	10+00	RT.	920																
4-D	0+80	10+00	LT.	920																
5-P	0+21	0+80	LT.																	
6-P	0+21	3+50	E.M.																	
7-P	0+21	0+80	RT.																	
8-B	0+80	10+00	LT.																	
9-B	0+50	10+00	LT.																	
10-B	0+50	10+00	LT.																	
11-B	0+80	10+00	RT.																	
TOTALS			3,680	20	31				100	224	39	37	284	1,662	1.74					

TYPICAL SECTION OF ADJOINING PAVEMENT  
(STATE ROUTE #665)  
3" 21-35 on B-20

FOR DETAILS OF INTERSECTION  
SEE SHEET No 70

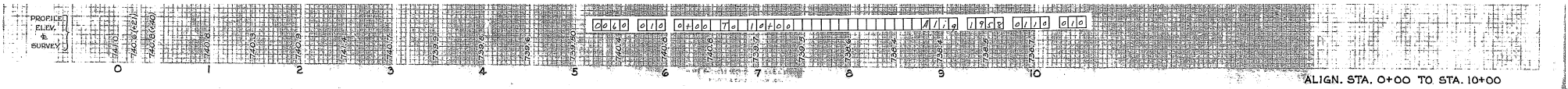
B.M. - Point on O.B.T. M.H. West side on lip marked by 9 center punch marks 3. side S.R. #665 & W. side Lockbourne A.F.B. Dr. Sta. 0-57, 44.4' Lt. Elev. - 740.22

ALL ELEVATIONS ARE BASED  
ON U.S.G.S. DATUM



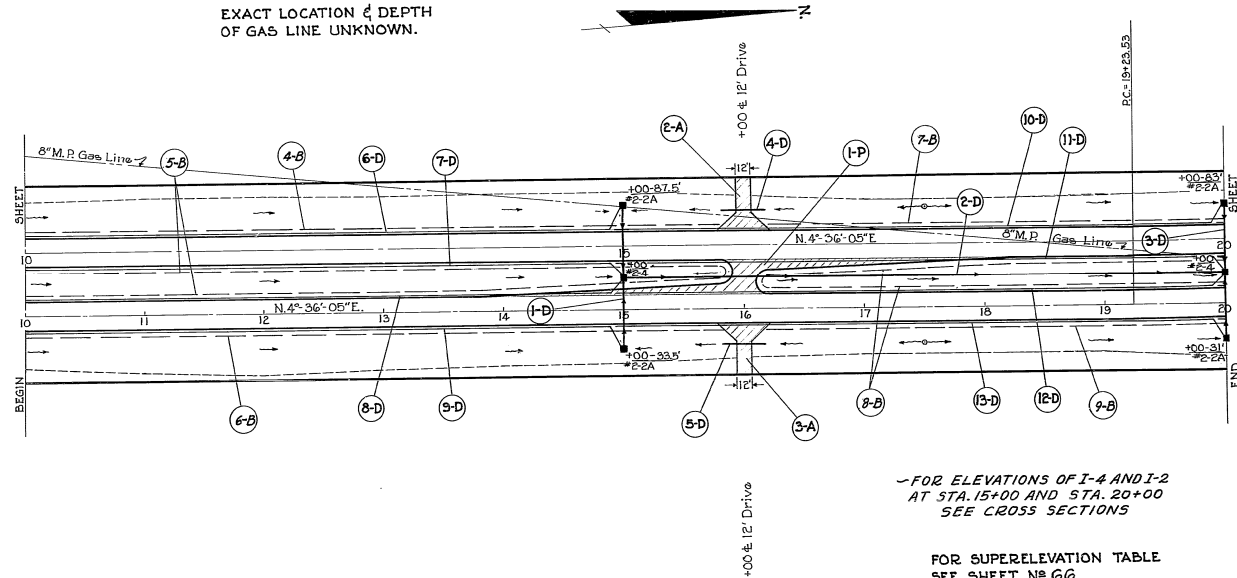
E-101 COMPACTED SUBGRADE = 5,644 SQ.YDS.  
L-9 SEEDING = 9,459 SQ.YDS.  
EXCAVATION = 8,525 CU.YDS.  
EMBANKMENT = 19 CU.YDS.  
EMB. + 20% = 23 CU.YDS.  
L-9 FERTILIZER = 0.85 TONS

UTILITIES AND AGENCIES  
OHIO BELL TELEPHONE COMPANY  
COLUMBUS, OHIO  
OHIO MIDLAND LIGHT AND POWER COMPANY  
CANAL WINCHESTER, OHIO  
OHIO FUEL GAS COMPANY  
COLUMBUS, OHIO  
DEPARTMENT OF PUBLIC WORKS  
STATE OF OHIO  
COLUMBUS, OHIO  
VILLAGE OF OBETZ  
OBETZ, OHIO



ALIGN. STA. 0+00 TO STA. 10+00

EXACT LOCATION & DEPTH  
OF GAS LINE UNKNOWN.

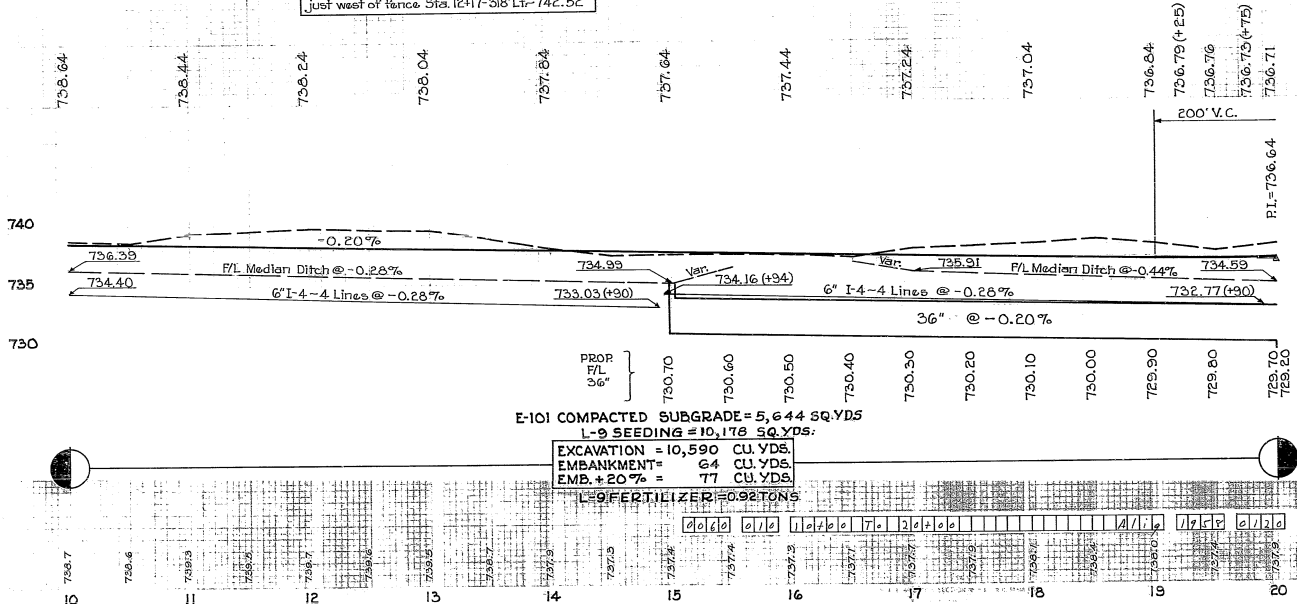


FOR ELEVATIONS OF I-4 AND I-2  
AT STA. 15+00 AND STA. 20+00  
SEE CROSS SECTIONS

FOR SUPERELEVATION TABLE  
SEE SHEET #66

FOR DETAIL OF CROSSOVER  
STA. 16+00 SEE SHEET #70

B.M. Brass plate top of O.B.T. conc. marker  
just west of fence Sta. 12+17-318 Lr-742.52



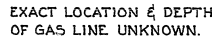
### DRAINAGE

REF. NO.	STATION	SIDE	CLASS B UNDER PAVEMENT LIN. FT.	CLASS C UNDER PAVEMENT LIN. FT.	PIPE OUTLET LIN. FT.	60" BEND	#2-2A CATCH BASIN EACH	#2-4 CATCH BASIN EACH	
			FROM	TO	FROM	TO	FROM	TO	
I-1	15+00	AC							
I-2	15+00	20+00	12	116	32	464			
I-3	20+00	AC							
I-4	15+82	16+18	Lt	36					
I-5	15+82	16+18	Rt	36					
I-6	10+00	15+00	Lt		490	20			
I-7	10+00	15+00	Lt		490	16			
I-8	10+00	15+00	Lt		490	16			
I-9	10+00	15+00	Rt		490	20			
I-10	18+94	20+00	Lt		502	20			
I-11	18+94	20+00	Lt		502	16			
I-12	18+94	20+00	Lt		502	16			
I-13	18+94	20+00	Rt		502	20			
TOTALS			72	108	116	32	464	3,968	144

### PAVEMENT

REF. NO.	STATION	SIDE	T-35 1 1/2" SURFACE	B-35 2 1/2" LEVELING	T-30 PRIME COAT	I-22 8" SUB BASE	I-18 6" THICK	I-18 4" STAB. SHLD'R	SPECIAL MIXING C.C. 3"	M-10 CALCIUM CHLORIDE
			FROM	TO	FROM	TO	FROM	TO	FROM	TO
I-1	16+00	AC								
I-2	16+00	Lt	13	22	113	72				
I-3	16+00	Rt								
I-4	10+00	Lt					14			
I-5	10+00	Lt					14			
I-6	10+00	Rt								
I-7	16+20	Lt						39.6	258	0.27
I-8	16+10	Lt						39.5	258	0.27
I-9	16+20	Lt						39.5	258	0.27
I-10	16+10	Lt						39.5	258	0.27
I-11	16+20	Lt						39.5	258	0.27
I-12	16+20	Rt						39.5	258	0.27
TOTALS			13	22	113	72	28	265.5	1,732	1.82





O.B.T. Marker

DRAINAGE & MISCELLANEOUS							
I-2	I-4	I-5	I-8	I-18	SPECIAL M.O.		

X Indicates to be removed.

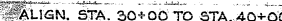
F/L I-4  
STA. 25+02  
RT=732.11  
INSIDE=733.53  
LT.=732.90

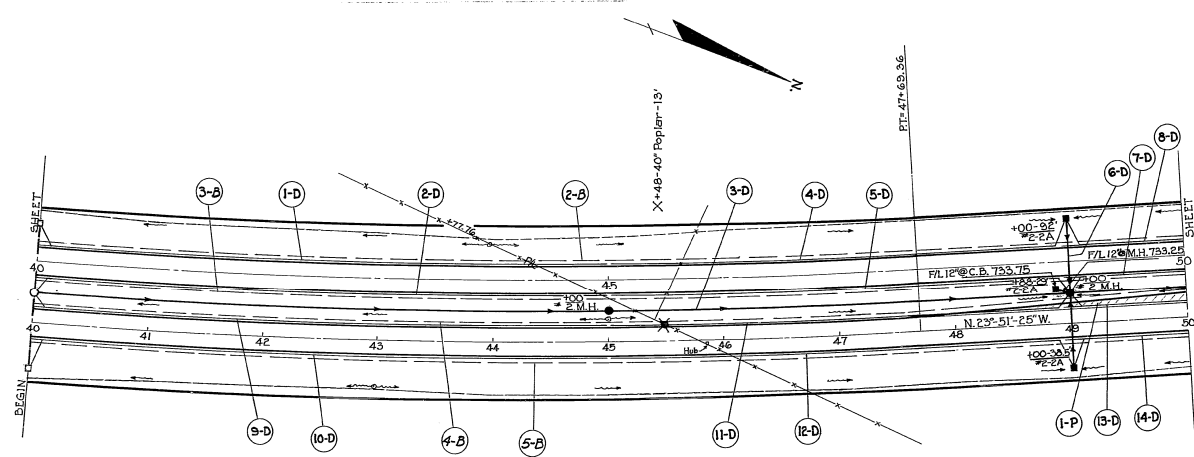
F/L I-4
STA. 29+90
RT. = 732.55
INSIDE = 731.97
LT. = 731.39



EXCAVATION = 19,213 CU.YDS.	FERTILIZER = 0.98 TONS
EMBANKMENT = 0 CU.YDS.	
EMB.+20% = 0 CU.YDS.	0060 010 2040 T. 30

ALIGN. STA. 20+00 TO STA. 30+00





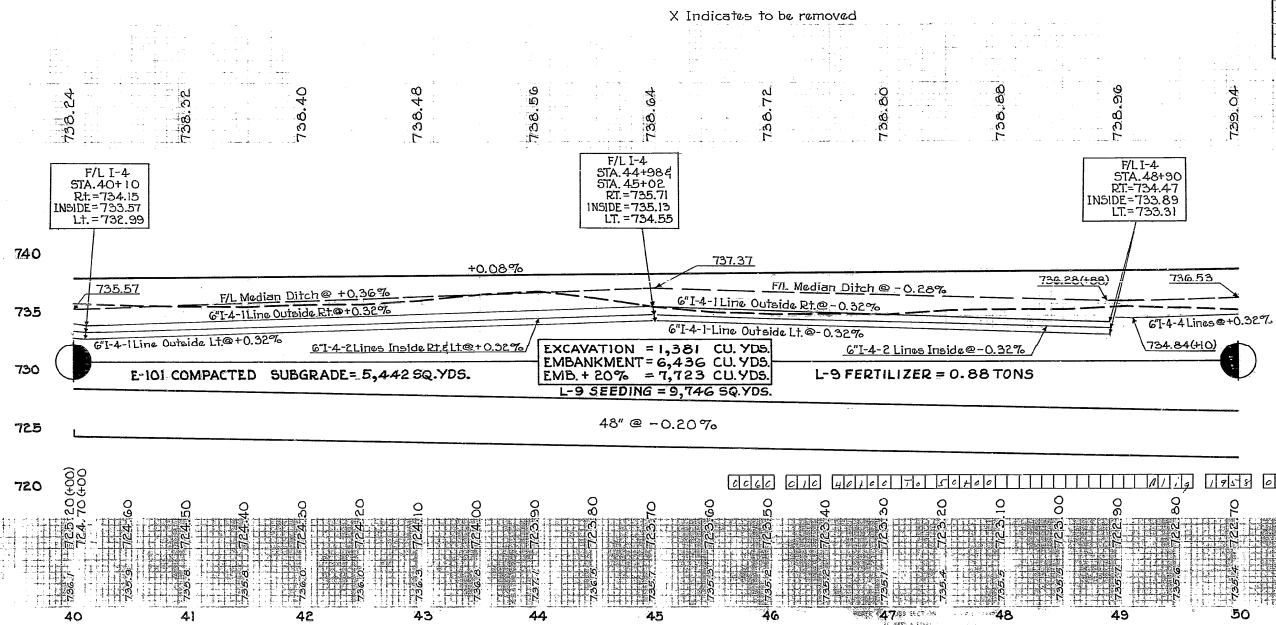
DRAINAGE										
REF. NO.	STATION	SIDE	I-2		I-4		I-5		I-8	
			CLASS B UNDER PAVT LIN. FT.	CLASS B STODM SEWER LIN. FT.	M-6.4C LIN. FT.	PIPE OUTLET M-6.4C LIN. FT.	6" 90° BEND EACH	6"×6" WYE EACH	#2-2A CATCH BASIN EACH	#2 MAN HOLE EACH
	FROM TO		15"	48"	12"	6"				
1-D	40+00 44+98	Lt.				494	20			
2-D	40+00 44+98	Lt.				494	16			
3-D	40+00 50+00	L.M.	986			390	24	1		2
4-D	49+00 49+00	Lt.				390	16	1		
5-D	45+02 49+00	Lt.								
6-D	49+00	AC.	124		10				3	
7-D	49+00 50+00	Lt.				98	16			
8-D	49+00 50+00	Lt.				98	24	1		
9-D	40+00 44+98	Lt.				498	16	1		
10-D	40+00 44+98	Rt.				498	26			
11-D	45+02 49+00	Lt.				388	16	1		
12-D	45+02 49+00	Rt.				388	26			
13-D	49+00 50+00	Lt.				100	16	1		
14-D	49+00 50+00	Rt.				100	26	1		
TOTALS			124	986	10	3,936	242	4	3	2

FOR SUPERELEVATION TABLE SEE SHEET No 66

FOR ELEVATIONS OF I-4 AND I-2 AT STA. 49+00 SEE CROSS SECTIONS

PAVEMENT									
REF. NO.	STATION	SIDE	T-35	B-35	T-30	I-22	I-18	SPECIAL	M-10
			1 1/2" SURFACE	2 1/2" LEVELING	PRIME COAT	8" SUB. BASE	5 TAB. SHLD	MIXING C.C. 3"	CALCIUM CHLORIDE
1-P	47+58	Lt.	6	10	47	30	67	440	0.46
2-B	40+00	Lt.					67	440	0.46
3-B	40+00	Lt.					68	444	0.47
4-B	40+00	Lt.					68	444	0.47
5-B	40+00	Lt.					68	444	0.47
TOTALS			6	10	47	30	270	1,768	1.86

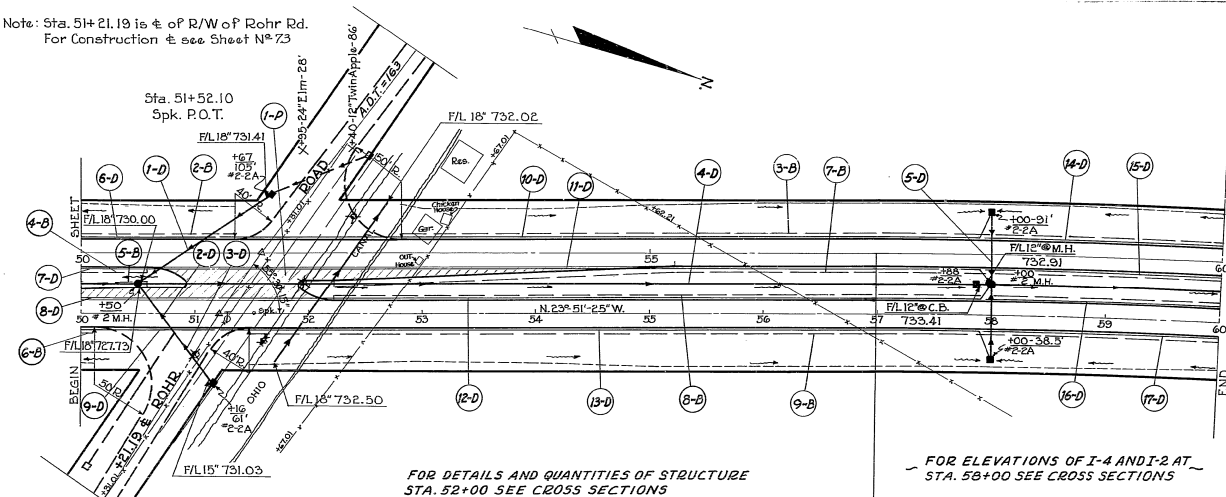
E-9			
SIZE	TREES	STUMPS	TOTAL
36"-42"			1
GRAND TOTAL			1



ALIGN. STA. 40+00 TO STA. 50+00

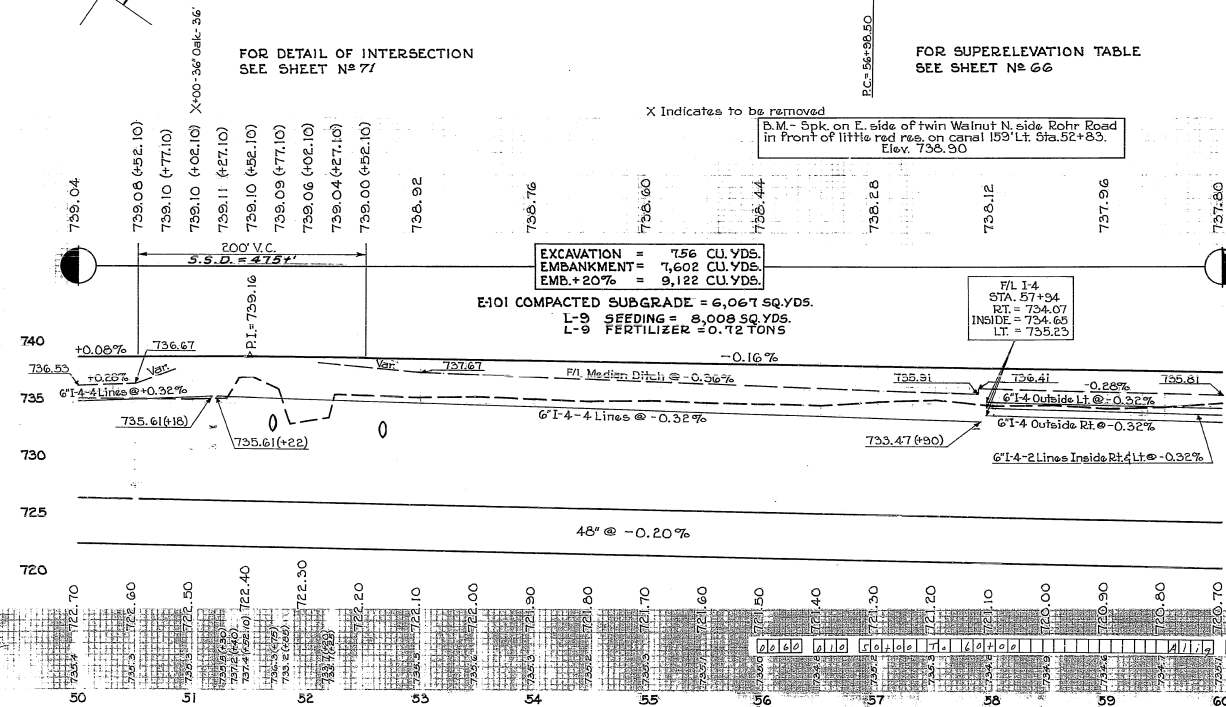
Note: Sta. 51+21.19 is E of R/W of Rohr Rd.  
For Construction E see Sheet N° 73

FRANKLIN COUNTY  
COUNTY ROAD N°122



DRAINAGE												
REF. N°	STATION	SIDE	I-2 CLASS B UNDER PAVT.	I-2 CLASS B STORM SEWER	I-2 M-6.4c	I-4 M-6.7b	I-4 M-6.4c	I-5 60°	I-6 60°	I-6 60°	I-6 60°	I-6 60°
FROM	TO		LINE	LINE	LINE	LINE	LINE	LINE	LINE	LINE	LINE	LINE
1-D	50+00	LT	84	56								
2-D	50+50	AC	52									
3-D	50+80	LT										
4-D	50+00	RT										
5-D	58+00	AC	124									
6-D	50+00	LT										
7-D	50+00	LT										
8-D	50+00	LT										
9-D	50+00	LT										
10-D	51+22	LT										
11-D	51+22	LT										
12-D	51+22	LT										
13-D	51+22	LT										
14-D	51+22	LT										
15-D	51+22	LT										
16-D	51+22	LT										
17-D	51+22	LT										
TOTALS			180	138	56	10	3,368	82	4	5	2	100

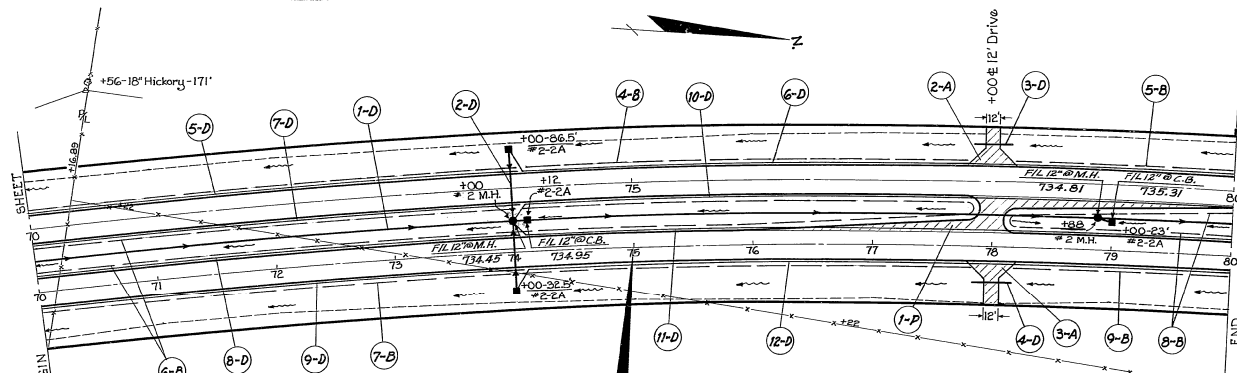
PAVEMENT												
REF. N°	STATION	SIDE	1 1/2" SURFACE	2 1/2" PRIME	3 1/2" SUB	4 1/2" CURB	5 1/2" STAB.	6 1/2" C.C.	7 1/2" MIXING	8 1/2" SPECIAL	9 1/2" M-10	10 1/2" CALCIUM
FROM	TO		CU.YDS.	CU.YDS.	CU.YDS.	CU.YDS.	CU.YDS.	CU.YDS.	CU.YDS.	CU.YDS.	CU.YDS.	CU.YDS.
1-D	50+00	AC										
2-D	50+00	LT										
3-D	50+00	LT										
4-D	50+00	LT										
5-D	50+00	LT										
6-D	50+00	LT										
7-D	50+00	LT										
8-D	50+00	LT										
9-D	51+48	RT										
TOTALS			30	50	248	157	137	231	1,507	1,59		



E-9		
SIZE	TREES	STUMPS
12"-18"	1	1
18"-30"	1	1
30"-42"	1	1
GRAND TOTAL		3

ALIGN. STA. 50+00 TO STA. 60+00





Marker will be furnished and erected on the left by the State before acceptance of this improvement.

END PROJECT  
DS-1206(8)  
STA. 75+00

BEGIN PROJECT  
S-1206(4)  
STA. 75+00

Marker will be furnished and erected on the right by the State before acceptance of this improvement.

DS-1206(8)

PROPOSED CURVE DATA

N.B. LANE  
P.I. = Sta. 70+81.54  
Δ = 27°-08'-30" Rt.  
D = 1°-00'  
R = 5729.58'  
T = 1353.04'  
L = 2714.17'  
E = 164.55'

S.B. LANE  
Δ = 27°-08'-30" Rt.  
D = 0°-59'-27"  
R = 5783.58'  
L = 2739.65'

FOR ELEVATIONS OF I-4 AND I-2  
AT STA. 74+00 SEE CROSS SECTIONS

FOR SUPERELEVATION TABLE  
SEE SHEET N° 66

FOR DETAIL OF CROSSOVER  
STA. 18+00 SEE SHEET N° 70

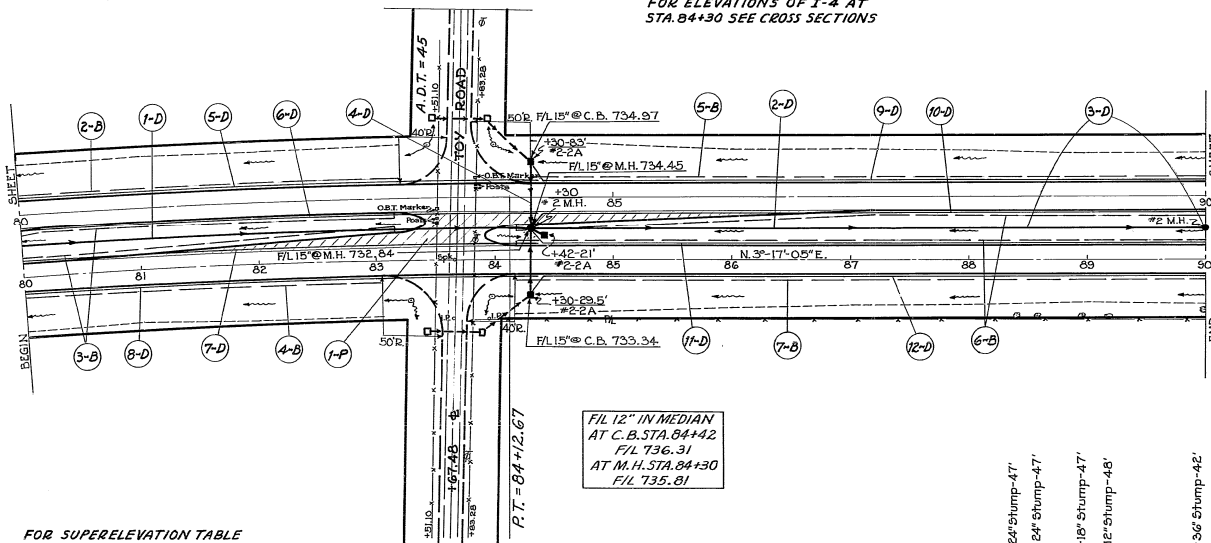
DRAINAGE													
REF. N°	STATION	SIDE	I-1 M-6.5b or M-6.4a LIN. FT.	I-2 M-6.4c LIN. FT.	I-2 CLASS B UNDER P.V.M.T. LIN. FT.	I-2 M-6.6c UNDER P.V.M.T. LIN. FT.	I-4 M-6.7b LIN. FT.	I-4 PIPE OUTLET M-6.4c LIN. FT.	I-5 6° BEND EACH	I-8 #2-2A CATCH BASIN EACH	I-9 #2 MAN- HOLE EACH		
	FROM TO		12	12	15	48	48	6	8				
I-1	70+00 90+00	E.M.	12	10	112	964	32						
I-2	70+00 90+00	E.M.	12	10	112	964	32						
I-3	70+00 90+00	E.M.	12	10	112	964	32						
I-4	70+00 90+00	E.M.	12	10	112	964	32						
I-5	70+00 90+00	E.M.	12	10	112	964	32						
I-6	70+00 90+00	E.M.	12	10	112	964	32						
I-7	70+00 90+00	E.M.	12	10	112	964	32						
I-8	70+00 90+00	E.M.	12	10	112	964	32						
I-9	70+00 90+00	E.M.	12	10	112	964	32						
I-10	70+00 90+00	E.M.	12	10	112	964	32						
I-11	70+00 90+00	E.M.	12	10	112	964	32						
I-12	70+00 90+00	E.M.	12	10	112	964	32						
I-13	70+00 90+00	E.M.	12	10	112	964	32						
I-14	70+00 90+00	E.M.	12	10	112	964	32						
I-15	70+00 90+00	E.M.	12	10	112	964	32						
I-16	70+00 90+00	E.M.	12	10	112	964	32						
I-17	70+00 90+00	E.M.	12	10	112	964	32						
I-18	70+00 90+00	E.M.	12	10	112	964	32						
I-19	70+00 90+00	E.M.	12	10	112	964	32						
I-20	70+00 90+00	E.M.	12	10	112	964	32						
I-21	70+00 90+00	E.M.	12	10	112	964	32						
I-22	70+00 90+00	E.M.	12	10	112	964	32						
I-23	70+00 90+00	E.M.	12	10	112	964	32						
I-24	70+00 90+00	E.M.	12	10	112	964	32						
I-25	70+00 90+00	E.M.	12	10	112	964	32						
I-26	70+00 90+00	E.M.	12	10	112	964	32						
I-27	70+00 90+00	E.M.	12	10	112	964	32						
I-28	70+00 90+00	E.M.	12	10	112	964	32						
I-29	70+00 90+00	E.M.	12	10	112	964	32						
I-30	70+00 90+00	E.M.	12	10	112	964	32						
I-31	70+00 90+00	E.M.	12	10	112	964	32						
I-32	70+00 90+00	E.M.	12	10	112	964	32						
I-33	70+00 90+00	E.M.	12	10	112	964	32						
I-34	70+00 90+00	E.M.	12	10	112	964	32						
I-35	70+00 90+00	E.M.	12	10	112	964	32						
I-36	70+00 90+00	E.M.	12	10	112	964	32						
I-37	70+00 90+00	E.M.	12	10	112	964	32						
I-38	70+00 90+00	E.M.	12	10	112	964	32						
I-39	70+00 90+00	E.M.	12	10	112	964	32						
I-40	70+00 90+00	E.M.	12	10	112	964	32						
I-41	70+00 90+00	E.M.	12	10	112	964	32						
I-42	70+00 90+00	E.M.	12	10	112	964	32						
I-43	70+00 90+00	E.M.	12	10	112	964	32						
I-44	70+00 90+00	E.M.	12	10	112	964	32						
I-45	70+00 90+00	E.M.	12	10	112	964	32						
I-46	70+00 90+00	E.M.	12	10	112	964	32						
I-47	70+00 90+00	E.M.	12	10	112	964	32						
I-48	70+00 90+00	E.M.	12	10	112	964	32						
I-49	70+00 90+00	E.M.	12	10	112	964	32						
I-50	70+00 90+00	E.M.	12	10	112	964	32						
I-51	70+00 90+00	E.M.	12	10	112	964	32						
I-52	70+00 90+00	E.M.	12	10	112	964	32						
I-53	70+00 90+00	E.M.	12	10	112	964	32						
I-54	70+00 90+00	E.M.	12	10	112	964	32						
I-55	70+00 90+00	E.M.	12	10	112	964	32						
I-56	70+00 90+00	E.M.	12	10	112	964	32						
I-57	70+00 90+00	E.M.	12	10	112	964	32						
I-58	70+00 90+00	E.M.	12	10	112	964	32						
I-59	70+00 90+00	E.M.	12	10	112	964	32						
I-60	70+00 90+00	E.M.	12	10	112	964	32						
I-61	70+00 90+00	E.M.	12	10	112	964	32						
I-62	70+00 90+00	E.M.	12	10	112	964	32						
I-63	70+00 90+00	E.M.	12	10	112	964	32						
I-64	70+00 90+00	E.M.	12	10	112	964	32						
I-65	70+00 90+00	E.M.	12	10	112	964	32						
I-66	70+00 90+00	E.M.	12	10	112	964	32						
I-67	70+00 90+00	E.M.	12	10	112	964	32						
I-68	70+00 90+00	E.M.	12	10	112	964	32						
I-69	70+00 90+00	E.M.	12	10	112	964	32						
I-70	70+00 90+00	E.M.	12	10	112	964	32						
I-71	70+00 90+00	E.M.	12	10	112	964	32						
I-72	70+00 90+00	E.M.	12	10	112	964	32						
I-73	70+00 90+00	E.M.	12	10	112	964	32						
I-74	70+00 90+00	E.M.	12	10	112	964	32						
I-75	70+00 90+00	E.M.	12	10	112	964	32						
I-76	70+00 90+00	E.M.	12	10	112	964	32						
I-77	70+00 90+00	E.M.	12	10	112	964	32						
I-78	70+00 90+00	E.M.	12	10	112	964	32						
I-79	70+00 90+00	E.M.	12	10	112	964	32						
I-80	70+00 90+00	E.M.	12	10	112	964	32						
I-81	70+00 90+00	E.M.	12	10	112	964	32						
I-82	70+00 90+00	E.M.	12	10	112	964	32						
I-83	70+00 90+00	E.M.	12	10	112	964	32						
I-84	70+00 90+00	E.M.	12	10	112	964	32						
I-85	70+00 90+00	E.M.	12	10	112	964	32						
I-86	70+00 90+00	E.M.	12	10	112	964	32						
I-87	70+00 90+00	E.M.	12	10	112	964	32						
I-88	70+00 90+00	E.M.	12	10	112	964	32						
I-89	70+00 90+00	E.M.	12	10	112	964	32						
I-90	70+00 90+00	E.M.	12	10	112	964	32						
I-91	70+00 90+00	E.M.	12	10	112	964	32						
I-92	70+00 90+00	E.M.	12	10	112	964	32						
I-93	70+00 90+00	E.M.	12	10	112	964	32						
I-94	70+00 90+00	E.M.	12	10	112	964	32						
I-95	70+00 90+00	E.M.	12	10	112	964	32						
I-96	70+00 90+00	E.M.	12	10	112	964	32						
I-97	70+00 90+00	E.M.	12	10	112	964	32						
I-98	70+00 90+00	E.M.	12	10	112	964	32						
I-99	70+00 90+00	E.M.	12	10	112	964	32						
I-100	70+00 90+00	E.M.	12	10	112	964	32						
I-101	70+00 90+00	E.M.	12	10	112	964	32						
I-102	70+00 90+00	E.M.	12	10	112	964	32						
I-103	70+00 90+00	E.M.	12	10	112	964	32						
I-104	70+00 90+00	E.M.	12	10	112	964	32						
I-105	70+00 90+00	E.M.	12	10	112	964	32						
I-106	70+00 90+00	E.M.	12	10	112	964	32						
I-107	70+00 90+00	E.M.	12	10	112	964	32						
I-108	70+00 90+00	E.M.	12	10	112	964	32						
I-109	70+00 90+00	E.M.	12	10	112	964	32						
I-110	70+00 90+00	E.M.	12	10	112	964	32						
I-111	70+00 90+00	E.M.	12	10	112	964	32						
I-112	70+00 90+00	E.M.	12	10	112	964	32						
I-113	70+00 90+00	E.M.	12	10	112	964	32						
I-114	70+00 90+00	E.M.	12	10	112	964	32						
I-115	70+00 90+00	E.M.	12	10	112	964	32						
I-116	70+00 90+00	E.M.	12	10	112	964	32						
I-117	70+00 90+00	E.M.	12	10	112	964	32						
I-118	70+00 90+00	E.M.	12	10	112	964	32						
I-119	70+00 90+00	E.M.	12	10	112	964	32						
I-120	70+00 90+00	E.M.	12	10	112	964	32						
I-121	70+00 90+00	E.M.	12	10	112	964	32						
I-122	70+00 90+00	E.M.	12	10	112	964	32						
I-123	70+00 90+00	E.M.	12	10	112	964	32						
I-124	70+00 90+00	E.M.	12	10	112	964	32						
I-125	70+00 90+00	E.M.	12	10	112	964	32						
I-126	70+00 90+00	E.M.	12	10	112	964	32						
I-127	70+00 90+00	E.M.	12	10	112	964	32						
I-128	70+00 90+00	E.M.	12	10	112	964	32						
I-129	70+00 90+00	E.M.	12	10	112	964	32						
I-130	70+00 90+00	E.M.	12	10	112	964	32						
I-131	70+00 90+00	E.M.	12	10	112	964	32						
I-132	70+00 90+00	E.M.	12	10	112	964	32						

FOR DETAIL OF INTERSECTION  
SEE SHEET N° 71

Sta. 83+65.58  
Spk. on t. 4  
I.P. 50' Rt.

Sta. 83+95.27  
I.P. 49.78' Rt.

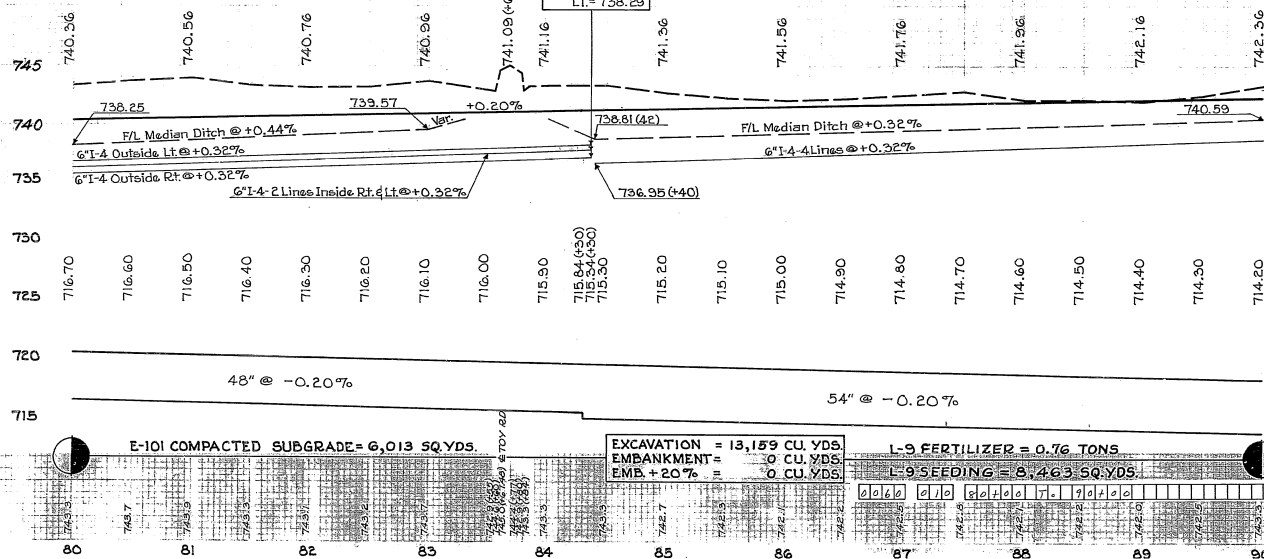
FOR ELEVATIONS OF I-4 AT  
STA. 84+30 SEE CROSS SECTIONS



FOR SUPERELEVATION TABLE  
SEE SHEET N° 66

B.M. - Top N.E. cor. wall set well on W side of Res.  
262' Rt. Sta. 80+16 perpendicular to chord between  
Sta. 80+00 & 81+00. Elev. 747.29

F/L I-4  
STA. 84+36  
RT = 737.22  
INSIDE = 737.75  
LT = 738.29



EXCAVATION = 13,159 CU. YDS.  
EMBANKMENT = 0 CU. YDS.  
EMB. + 20% = 0 CU. YDS.

L-9 FERTILIZER = 0.76 TONS  
L-9 SEEDING = 8,463 SQ. YDS.

0.00 0.10 0.20 0.30 0.40 0.50 0.60 0.70 0.80 0.90 1.00 1.10 1.20 1.30 1.40 1.50 1.60 1.70 1.80 1.90 2.00

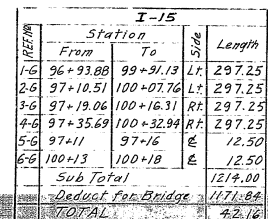
REF. N°	STATION	SIDE	DRAINAGE											
			I-2		I-2		I-2		I-2		I-2		I-2	
			FROM	TO	FROM	TO	FROM	TO	FROM	TO	FROM	TO	FROM	TO
1-D	80+00	84+30	2.0	2.0	2.0	2.0	2.0	2.0	2.0	2.0	2.0	2.0	2.0	2.0
2-D	84+30	88+50	2.0	2.0	2.0	2.0	2.0	2.0	2.0	2.0	2.0	2.0	2.0	2.0
3-D	88+50	90+00	2.0	2.0	2.0	2.0	2.0	2.0	2.0	2.0	2.0	2.0	2.0	2.0
4-D	80+00	84+30	2.0	2.0	2.0	2.0	2.0	2.0	2.0	2.0	2.0	2.0	2.0	2.0
5-D	80+00	84+30	2.0	2.0	2.0	2.0	2.0	2.0	2.0	2.0	2.0	2.0	2.0	2.0
6-D	80+00	84+30	2.0	2.0	2.0	2.0	2.0	2.0	2.0	2.0	2.0	2.0	2.0	2.0
7-D	80+00	84+30	2.0	2.0	2.0	2.0	2.0	2.0	2.0	2.0	2.0	2.0	2.0	2.0
8-D	80+00	84+30	2.0	2.0	2.0	2.0	2.0	2.0	2.0	2.0	2.0	2.0	2.0	2.0
9-D	84+40	90+00	2.0	2.0	2.0	2.0	2.0	2.0	2.0	2.0	2.0	2.0	2.0	2.0
10-D	84+40	90+00	2.0	2.0	2.0	2.0	2.0	2.0	2.0	2.0	2.0	2.0	2.0	2.0
11-D	84+40	90+00	2.0	2.0	2.0	2.0	2.0	2.0	2.0	2.0	2.0	2.0	2.0	2.0
12-D	84+40	90+00	2.0	2.0	2.0	2.0	2.0	2.0	2.0	2.0	2.0	2.0	2.0	2.0
TOTALS			10	108	200	400	140	148	3,992	64	4	3	2	

REF. N°	STATION	SIDE	PAVEMENT											
			I-2		I-2		I-2		I-2		I-2		I-2	
			FROM	TO	FROM	TO	FROM	TO	FROM	TO	FROM	TO	FROM	TO
1-D	80+00	84+30	2.0	2.0	2.0	2.0	2.0	2.0	2.0	2.0	2.0	2.0	2.0	2.0
2-D	84+30	88+50	2.0	2.0	2.0	2.0	2.0	2.0	2.0	2.0	2.0	2.0	2.0	2.0
3-D	88+50	90+00	2.0	2.0	2.0	2.0	2.0	2.0	2.0	2.0	2.0	2.0	2.0	2.0
4-D	80+00	84+30	2.0	2.0	2.0	2.0	2.0	2.0	2.0	2.0	2.0	2.0	2.0	2.0
5-D	80+00	84+30	2.0	2.0	2.0	2.0	2.0	2.0	2.0	2.0	2.0	2.0	2.0	2.0
6-D	80+00	84+30	2.0	2.0	2.0	2.0	2.0	2.0	2.0	2.0	2.0	2.0	2.0	2.0
7-D	84+40	90+00	2.0	2.0	2.0	2.0	2.0	2.0	2.0	2.0	2.0	2.0	2.0	2.0
TOTALS			28	46	229	146	112	244.5	1594	1.67				



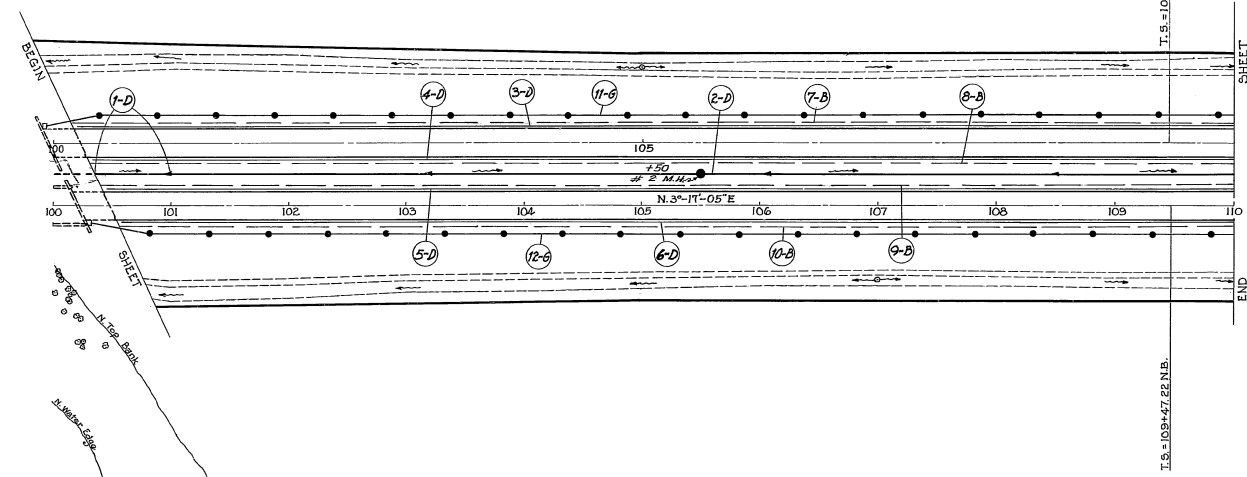
FOR DETAILS SEE SHEET № 68

ALIGNMENT: *Tangent.*

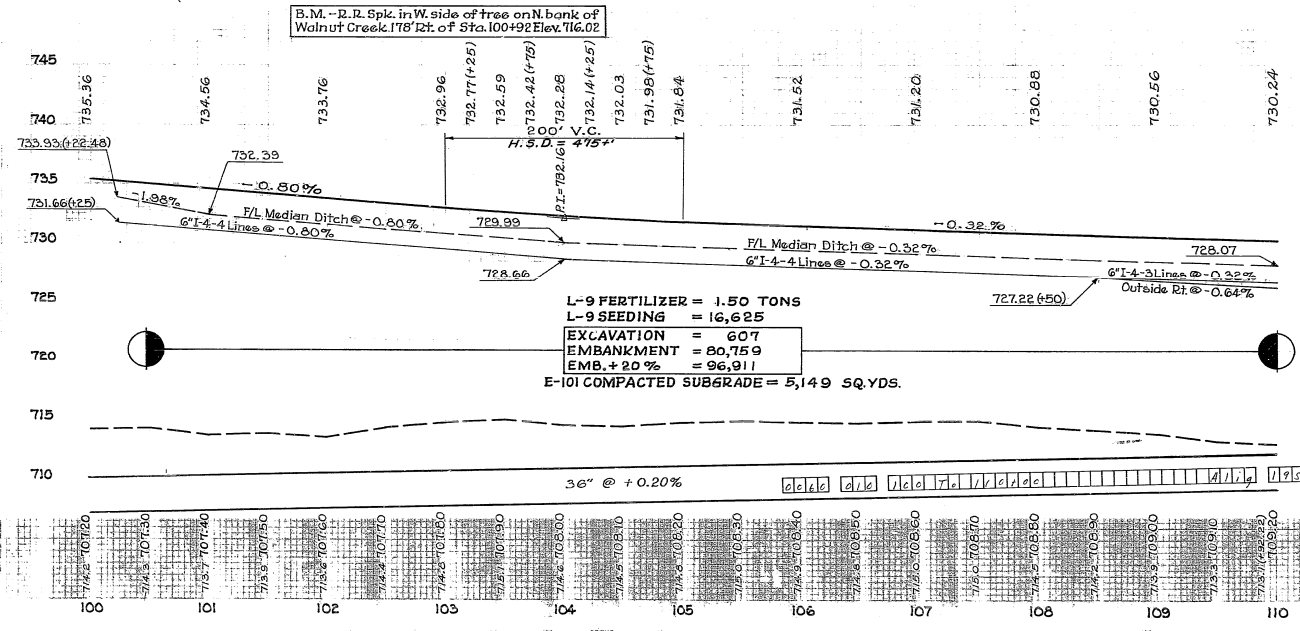


\* FOR DETAILS SEE SHEET № 68



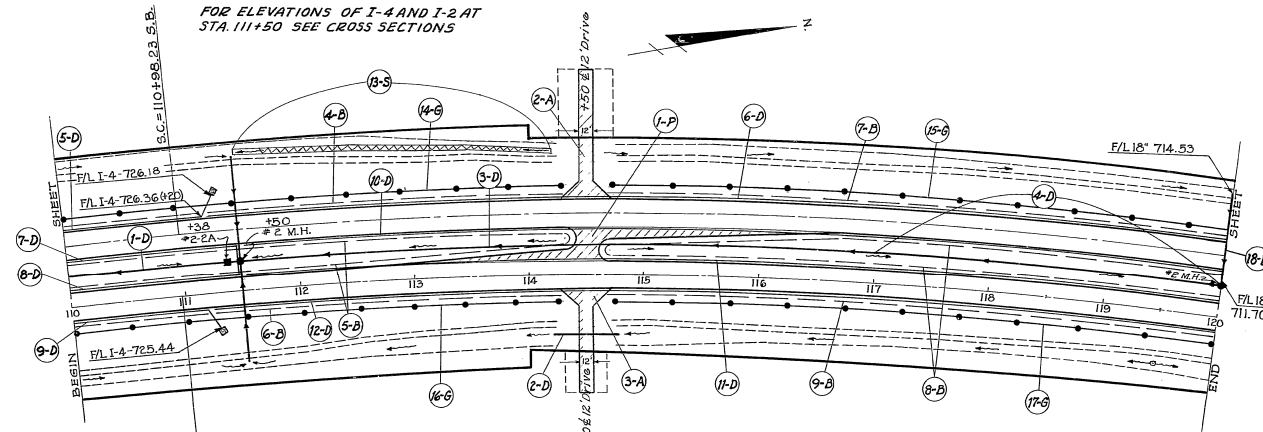


DRAINAGE & MISCELLANEOUS											
REF Nº	STATION	SIDE	I-3	I-3	I-4	I-18	SPECIAL	M-10	I-15	I-8	
			M-6.6c	M-106.6c	M-6.7b	4'	MINING C.C.	CALCIUM SILICIDE	GUARD RAIL	#2 MAIN HOLE	
			LIN.FT.	LIN.FT.	LIN.FT.	STAB. SALDYE	3"	TONS	LIN.FT.	EACH	
FROM TO			36"	36"	6"	CUYDS.	52YDS.	TONS	LIN.FT.	EACH	
7-D	100+34.8	101+00	E.M.								
7-D	101+00	110+00	E.M.	896	64					1	
3-D	100+20	110+00	L.F.			980					
4-D	100+33	110+00	L.F.			966					
5-D	100+45	110+00	L.F.			956					
6-D	100+58	110+00	R.F.			942					
7-B	100+16	110+00	L.F.				67	437	0.46		
8-B	100+30	110+00	L.F.				66	431	0.45		
9-B	100+41	110+00	L.F.				65	426	0.45		
10-B	100+55	110+00	R.F.				64	420	0.44		
11-G	99+91.13	110+00	L.F.						1008.87	367.08	
12-E	100+32.84	110+00	R.F.								
TOTALS				896	64	3,844	2,622	1,714	1.80	1,975.33	1



L-9 FERTILIZER = 1.50 TONS  
L-9 SEEDING = 16,625  
EXCAVATION = 607  
EMBANKMENT = 80,759  
EMB.+20% = 96,911  
E-101 COMPACTED SUBGRADE = 5,149 SQ.YDS.

FOR ELEVATIONS OF I-4 AND I-2 AT  
STA. 111+50 SEE CROSS SECTIONS



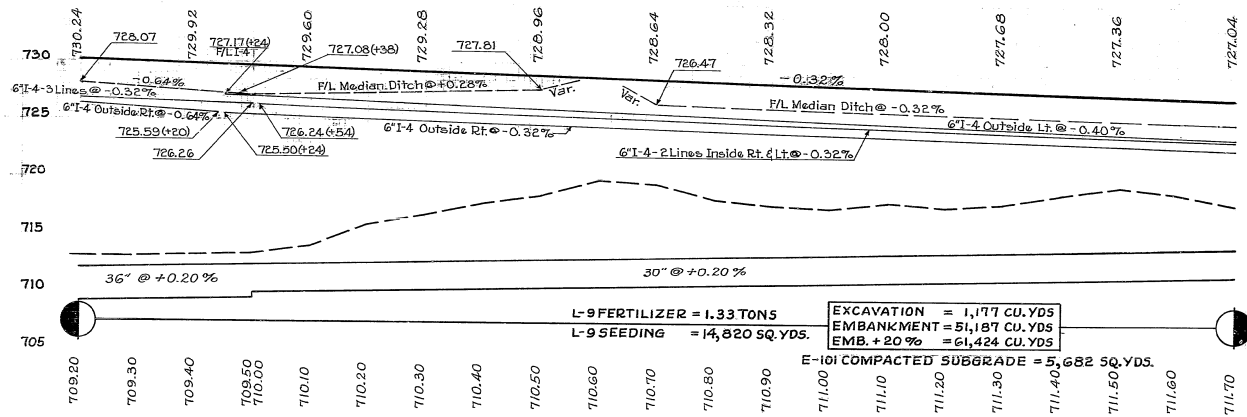
FIL 15' IN MEDIAN  
AT C.B. STA. 111+38  
FIL 724.33  
AT M.H. STA. 111+50  
FIL 723.83

FOR CROSSOVER AT STA. 114+50  
SEE SHEET N° 70

NORTH BOUND LANE  
PROPOSED CURVE DATA  
PI = Sta. 115+69.86  
Δ = 16°-19' Rt.  
D = 1°-30'  
R = 3619.72'  
Ls = 150'  
Tb = 622.64'  
Es = 39.35'  
Yc = 0.98'  
Xc = 149.39'  
L.S.C. = 937.78'  
Θs = 1°-07'-30"

SOUTH BOUND LANE  
PROPOSED CURVE DATA  
PI = Sta. 115+77.60  
Δ = 16°-19' Rt.  
D = 1°-26'-45"  
R = 3873.72'  
Ls = 152'  
Tb = 631.37'  
Es = 39.86'  
Yc = 0.90'  
Xc = 151.99'  
L.S.C. = 951.71'  
Θs = 1°-07'-12"

FOR SUPERELEVATION TABLE  
SEE SHEET N° 67



L-9 FERTILIZER = 1.33 TONS  
L-9 SEEDING = 14,820 SQ. YDS.

EXCAVATION = 1,177 CU. YDS  
EMBANKMENT = 51,187 CU. YDS  
EMB. + 20% = 61,424 CU. YDS

E-101 COMPACTED SUBGRADE = 5,682 SQ. YDS.

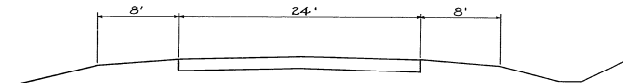
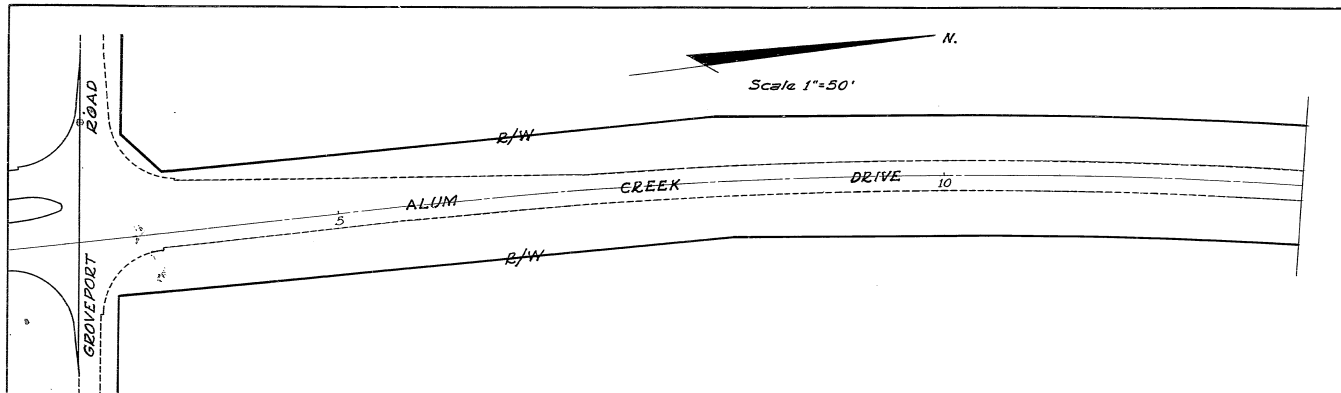
REF. N°	STATION	SIDE	DRAINAGE	F. MISC.	1-1	1-2	1-3	1-4	1-5	1-6	1-7	1-8	1-9	1-10	1-11	1-12	1-13	1-14	1-15	1-16	1-17	1-18	1-19	1-20	1-21	1-22	1-23	1-24	1-25	1-26	1-27	1-28	1-29	1-30	1-31	1-32	1-33	1-34	1-35	1-36	1-37	1-38	1-39	1-40	1-41	1-42	1-43	1-44	1-45	1-46	1-47	1-48	1-49	1-50	1-51	1-52	1-53	1-54	1-55	1-56	1-57	1-58	1-59	1-60	1-61	1-62	1-63	1-64	1-65	1-66	1-67	1-68	1-69	1-70	1-71	1-72	1-73	1-74	1-75	1-76	1-77	1-78	1-79	1-80	1-81	1-82	1-83	1-84	1-85	1-86	1-87	1-88	1-89	1-90	1-91	1-92	1-93	1-94	1-95	1-96	1-97	1-98	1-99	1-100	1-101	1-102	1-103	1-104	1-105	1-106	1-107	1-108	1-109	1-110	1-111	1-112	1-113	1-114	1-115	1-116	1-117	1-118	1-119	1-120	1-121	1-122	1-123	1-124	1-125	1-126	1-127	1-128	1-129	1-130	1-131	1-132	1-133	1-134	1-135	1-136	1-137	1-138	1-139	1-140	1-141	1-142	1-143	1-144	1-145	1-146	1-147	1-148	1-149	1-150	1-151	1-152	1-153	1-154	1-155	1-156	1-157	1-158	1-159	1-160	1-161	1-162	1-163	1-164	1-165	1-166	1-167	1-168	1-169	1-170	1-171	1-172	1-173	1-174	1-175	1-176	1-177	1-178	1-179	1-180	1-181	1-182	1-183	1-184	1-185	1-186	1-187	1-188	1-189	1-190	1-191	1-192	1-193	1-194	1-195	1-196	1-197	1-198	1-199	1-200	1-201	1-202	1-203	1-204	1-205	1-206	1-207	1-208	1-209	1-210	1-211	1-212	1-213	1-214	1-215	1-216	1-217	1-218	1-219	1-220	1-221	1-222	1-223	1-224	1-225	1-226	1-227	1-228	1-229	1-230	1-231	1-232	1-233	1-234	1-235	1-236	1-237	1-238	1-239	1-240	1-241	1-242	1-243	1-244	1-245	1-246	1-247	1-248	1-249	1-250	1-251	1-252	1-253	1-254	1-255	1-256	1-257	1-258	1-259	1-260	1-261	1-262	1-263	1-264	1-265	1-266	1-267	1-268	1-269	1-270	1-271	1-272	1-273	1-274	1-275	1-276	1-277	1-278	1-279	1-280	1-281	1-282	1-283	1-284	1-285	1-286	1-287	1-288	1-289	1-290	1-291	1-292	1-293	1-294	1-295	1-296	1-297	1-298	1-299	1-300	1-301	1-302	1-303	1-304	1-305	1-306	1-307	1-308	1-309	1-310	1-311	1-312	1-313	1-314	1-315	1-316	1-317	1-318	1-319	1-320	1-321	1-322	1-323	1-324	1-325	1-326	1-327	1-328	1-329	1-330	1-331	1-332	1-333	1-334	1-335	1-336	1-337	1-338	1-339	1-340	1-341	1-342	1-343	1-344	1-345	1-346	1-347	1-348	1-349	1-350	1-351	1-352	1-353	1-354	1-355	1-356	1-357	1-358	1-359	1-360	1-361	1-362	1-363	1-364	1-365	1-366	1-367	1-368	1-369	1-370	1-371	1-372	1-373	1-374	1-375	1-376	1-377	1-378	1-379	1-380	1-381	1-382	1-383	1-384	1-385	1-386	1-387	1-388	1-389	1-390	1-391	1-392	1-393	1-394	1-395	1-396	1-397	1-398	1-399	1-400	1-401	1-402	1-403	1-404	1-405	1-406	1-407	1-408	1-409	1-410	1-411	1-412	1-413	1-414	1-415	1-416	1-417	1-418	1-419	1-420	1-421	1-422	1-423	1-424	1-425	1-426	1-427	1-428	1-429	1-430	1-431	1-432	1-433	1-434	1-435	1-436	1-437	1-438	1-439	1-440	1-441	1-442	1-443	1-444	1-445	1-446	1-447	1-448	1-449	1-450	1-451	1-452	1-453	1-454	1-455	1-456	1-457	1-458	1-459	1-460	1-461	1-462	1-463	1-464	1-465	1-466	1-467	1-468	1-469	1-470	1-471	1-472	1-473	1-474	1-475	1-476	1-477	1-478	1-479	1-480	1-481	1-482	1-483	1-484	1-485	1-486	1-487	1-488	1-489	1-490	1-491	1-492	1-493	1-494	1-495	1-496	1-497	1-498	1-499	1-500	1-501	1-502	1-503	1-504	1-505	1-506	1-507	1-508	1-509	1-510	1-511	1-512	1-513	1-514	1-515	1-516	1-517	1-518	1-519	1-520	1-521	1-522	1-523	1-524	1-525	1-526	1-527	1-528	1-529	1-530	1-531	1-532	1-533	1-534	1-535	1-536	1-537	1-538	1-539	1-540	1-541	1-542	1-543	1-544	1-545	1-546	1-547	1-548	1-549	1-550	1-551	1-552	1-553	1-554	1-555	1-556	1-557	1-558	1-559	1-560	1-561	1-562	1-563	1-564	1-565	1-566	1-567	1-568	1-569	1-570	1-571	1-572	1-573	1-574	1-575	1-576	1-577	1-578	1-579	1-580	1-581	1-582	1-583	1-584	1-585	1-586	1-587	1-588	1-589	1-590	1-591	1-592	1-593	1-594	1-595	1-596	1-597	1-598	1-599	1-600	1-601	1-602	1-603	1-604	1-605	1-606	1-607	1-608	1-609	1-610	1-611	1-612	1-613	1-614	1-615	1-616	1-617	1-618	1-619	1-620	1-621	1-622	1-623	1-624	1-625	1-626	1-627	1-628	1-629	1-630	1-631	1-632	1-633	1-634	1-635	1-636	1-637	1-638	1-639	1-640	1-641	1-642	1-643	1-644	1-645	1-646	1-647	1-648	1-649	1-650	1-651	1-652	1-653	1-654	1-655	1-656	1-657	1-658	1-659	1-660	1-661	1-662	1-663	1-664	1-665	1-666	1-667	1-668	1-669	1-670	1-671	1-672	1-673	1-674	1-675	1-676	1-677	1-678	1-679	1-680	1-681	1-682	1-683	1-684	1-685	1-686	1-687	1-688	1-689	1-690	1-691	1-692	1-693	1-694	1-695	1-696	1-697	1-698	1-699	1-700	1-701	1-702	1-703	1-704	1-705	1-706	1-707	1-708	1-709	1-710	1-711	1-712	1-713	1-714	1-715	1-716	1-717	1-718	1-719	1-720	1-721	1-722	1-723	1-724	1-725	1-726	1-727	1-728	1-729	1-730	1-731	1-732	1-733	1-734	1-735	1-736	1-737	1-738	1-739	1-740	1-741	1-742	1-743	1-744	1-745	1-746	1-747	1-748	1-749	1-750	1-751	1-752	1-753	1-754	1-755	1-756	1-757	1-758	1-759	1-760	1-761	1-762	1-763	1-764	1-765	1-766	1-767	1-768	1-769	1-770	1-771	1-772	1-773	1-774	1-775	1-776	1-777	1-778	1-779	1-780	1-781	1-782	1-783	1-784	1-785	1-786	1-787	1-788	1-789	1-790	1-791	1-792	1-793	1-794	1-795	1-796	1-797	1-798	1-799	1-800	1-801	1-802	1-803	1-804	1-805	1-806	1-807	1-808	1-809	1-810	1-811	1-812	1-813	1-814	1-815	1-816	1-817	1-818	1-819	1-820	1-821	1-822	1-823	1-824	1-825	1-826	1-827	1-828	1-829	1-830	1-831	1-832	1-833	1-834	1-835	1-836	1-837	1-838	1-839	1-840	1-841	1-842	1-843	1-844	1-845	1-846	1-847	1-848	1-849	1-850	1-851	1-852	1-853	1-854	1-855	1-856	1-857	1-858	1-859	1-860	1-861	1-862	1-863	1-864	1-865	1-866	1-867	1-868	1-869	1-870	1-871	1-872	1-873	1-874	1-875	1-876	1-877	1-878	1-879	1-880	1-881	1-882	1-883	1-884	1-885	1-886	1-887	1-888	1-889	1-890	1-891	1-892	1-893	1-894	1-895	1-896	1-897	1-898	1-899	1-900	1-901	1-902	1-903	1-904	1-905	1-906	1-907	1-908	1-909	1-910	1-911	1-912	1-913	1-914	1-915	1-916	1-917	1-918	1-919	1-920	1-921	1-922	1-923	1-924	1-925	1-926	1-927	1-928	1-929	1-930	1-931	1-932	1-933	1-934	1-935	1-936	1-937	1-938	1-939	1-940	1-941	1-942	1-943	1-944	1-945	1-946	1-947	1-948	1-949	1-950	1-951	1-952	1-953	1-954	1-955	1-956	1-957	1-958	1-959	1-960	1-961	1-962	1-963	1-964	1-965	1-966	1-967	1-968	1-969	1-970	1-971	1-972	1-973	1-974	1-975	1-976	1-977	1-978	1-979	1-980	1-981	1-982	1-983	1-984	1-985	1-986	1-987	1-988	1-989	1-990	1-991	1-992	1-993	1-994	1-995	1-996	1-997	1-998	1-999	2-000	2-001	2-002	2-003	2-004	2-005	2-006	2-007	2-008	2-009	2-010	2-011	2-012	2-013	2-014	2-015	2-016	2-017	2-018	2-019	2-020	2-021	2-022	2-023	2-024	2-025	2-026	2-027	2-028	2-029	2-030	2-031	2-032	2-033	2-034	2-035	2-036	2-037	2-038	2-039	2-040	2-041	2-042	2-043	2-044	2-045	2-046	2-047	2-048	2-049	2-050	2-051	2-052	2-053	2-054	2-055	2-056	2-057	2-058	2-059	2-060	2-061	2-062	2-063	2-064	2-065	2-066	2-067	2-068	2-069	2-070	2-071	2-072	2-073	2-074	2-075	2-076	2-077	2-078	2-079	2-080	2-081	2-082	2-083	2-084	2-085	2-086	2-087	2-088	2-089	2-090	2-091	2-092	2-093	2-094	2-095	2-096	2-097	2-098	2-099	2-100	2-101	2-102	2-103	2-104	2-105	2-106	2-107	2-108	2-109	2-110	2-111	2-112	2-113	2-114	2-115	2-116	2-117	2-118	2-119	2-120	2-121	2-122	2-123	2-124	2-125	2-126	2-127	2-128	2-129	2-130	2-131	2-132	2-133	2-134	2-135	2-136	2-137	2-138
---------	---------	------	----------	----------	-----	-----	-----	-----	-----	-----	-----	-----	-----	------	------	------	------	------	------	------	------	------	------	------	------	------	------	------	------	------	------	------	------	------	------	------	------	------	------	------	------	------	------	------	------	------	------	------	------	------	------	------	------	------	------	------	------	------	------	------	------	------	------	------	------	------	------	------	------	------	------	------	------	------	------	------	------	------	------	------	------	------	------	------	------	------	------	------	------	------	------	------	------	------	------	------	------	------	------	------	------	------	------	-------	-------	-------	-------	-------	-------	-------	-------	-------	-------	-------	-------	-------	-------	-------	-------	-------	-------	-------	-------	-------	-------	-------	-------	-------	-------	-------	-------	-------	-------	-------	-------	-------	-------	-------	-------	-------	-------	-------	-------	-------	-------	-------	-------	-------	-------	-------	-------	-------	-------	-------	-------	-------	-------	-------	-------	-------	-------	-------	-------	-------	-------	-------	-------	-------	-------	-------	-------	-------	-------	-------	-------	-------	-------	-------	-------	-------	-------	-------	-------	-------	-------	-------	-------	-------	-------	-------	-------	-------	-------	-------	-------	-------	-------	-------	-------	-------	-------	-------	-------	-------	-------	-------	-------	-------	-------	-------	-------	-------	-------	-------	-------	-------	-------	-------	-------	-------	-------	-------	-------	-------	-------	-------	-------	-------	-------	-------	-------	-------	-------	-------	-------	-------	-------	-------	-------	-------	-------	-------	-------	-------	-------	-------	-------	-------	-------	-------	-------	-------	-------	-------	-------	-------	-------	-------	-------	-------	-------	-------	-------	-------	-------	-------	-------	-------	-------	-------	-------	-------	-------	-------	-------	-------	-------	-------	-------	-------	-------	-------	-------	-------	-------	-------	-------	-------	-------	-------	-------	-------	-------	-------	-------	-------	-------	-------	-------	-------	-------	-------	-------	-------	-------	-------	-------	-------	-------	-------	-------	-------	-------	-------	-------	-------	-------	-------	-------	-------	-------	-------	-------	-------	-------	-------	-------	-------	-------	-------	-------	-------	-------	-------	-------	-------	-------	-------	-------	-------	-------	-------	-------	-------	-------	-------	-------	-------	-------	-------	-------	-------	-------	-------	-------	-------	-------	-------	-------	-------	-------	-------	-------	-------	-------	-------	-------	-------	-------	-------	-------	-------	-------	-------	-------	-------	-------	-------	-------	-------	-------	-------	-------	-------	-------	-------	-------	-------	-------	-------	-------	-------	-------	-------	-------	-------	-------	-------	-------	-------	-------	-------	-------	-------	-------	-------	-------	-------	-------	-------	-------	-------	-------	-------	-------	-------	-------	-------	-------	-------	-------	-------	-------	-------	-------	-------	-------	-------	-------	-------	-------	-------	-------	-------	-------	-------	-------	-------	-------	-------	-------	-------	-------	-------	-------	-------	-------	-------	-------	-------	-------	-------	-------	-------	-------	-------	-------	-------	-------	-------	-------	-------	-------	-------	-------	-------	-------	-------	-------	-------	-------	-------	-------	-------	-------	-------	-------	-------	-------	-------	-------	-------	-------	-------	-------	-------	-------	-------	-------	-------	-------	-------	-------	-------	-------	-------	-------	-------	-------	-------	-------	-------	-------	-------	-------	-------	-------	-------	-------	-------	-------	-------	-------	-------	-------	-------	-------	-------	-------	-------	-------	-------	-------	-------	-------	-------	-------	-------	-------	-------	-------	-------	-------	-------	-------	-------	-------	-------	-------	-------	-------	-------	-------	-------	-------	-------	-------	-------	-------	-------	-------	-------	-------	-------	-------	-------	-------	-------	-------	-------	-------	-------	-------	-------	-------	-------	-------	-------	-------	-------	-------	-------	-------	-------	-------	-------	-------	-------	-------	-------	-------	-------	-------	-------	-------	-------	-------	-------	-------	-------	-------	-------	-------	-------	-------	-------	-------	-------	-------	-------	-------	-------	-------	-------	-------	-------	-------	-------	-------	-------	-------	-------	-------	-------	-------	-------	-------	-------	-------	-------	-------	-------	-------	-------	-------	-------	-------	-------	-------	-------	-------	-------	-------	-------	-------	-------	-------	-------	-------	-------	-------	-------	-------	-------	-------	-------	-------	-------	-------	-------	-------	-------	-------	-------	-------	-------	-------	-------	-------	-------	-------	-------	-------	-------	-------	-------	-------	-------	-------	-------	-------	-------	-------	-------	-------	-------	-------	-------	-------	-------	-------	-------	-------	-------	-------	-------	-------	-------	-------	-------	-------	-------	-------	-------	-------	-------	-------	-------	-------	-------	-------	-------	-------	-------	-------	-------	-------	-------	-------	-------	-------	-------	-------	-------	-------	-------	-------	-------	-------	-------	-------	-------	-------	-------	-------	-------	-------	-------	-------	-------	-------	-------	-------	-------	-------	-------	-------	-------	-------	-------	-------	-------	-------	-------	-------	-------	-------	-------	-------	-------	-------	-------	-------	-------	-------	-------	-------	-------	-------	-------	-------	-------	-------	-------	-------	-------	-------	-------	-------	-------	-------	-------	-------	-------	-------	-------	-------	-------	-------	-------	-------	-------	-------	-------	-------	-------	-------	-------	-------	-------	-------	-------	-------	-------	-------	-------	-------	-------	-------	-------	-------	-------	-------	-------	-------	-------	-------	-------	-------	-------	-------	-------	-------	-------	-------	-------	-------	-------	-------	-------	-------	-------	-------	-------	-------	-------	-------	-------	-------	-------	-------	-------	-------	-------	-------	-------	-------	-------	-------	-------	-------	-------	-------	-------	-------	-------	-------	-------	-------	-------	-------	-------	-------	-------	-------	-------	-------	-------	-------	-------	-------	-------	-------	-------	-------	-------	-------	-------	-------	-------	-------	-------	-------	-------	-------	-------	-------	-------	-------	-------	-------	-------	-------	-------	-------	-------	-------	-------	-------	-------	-------	-------	-------	-------	-------	-------	-------	-------	-------	-------	-------	-------	-------	-------	-------	-------	-------	-------	-------	-------	-------	-------	-------	-------	-------	-------	-------	-------	-------	-------	-------	-------	-------	-------	-------	-------	-------	-------	-------	-------	-------	-------	-------	-------	-------	-------	-------	-------	-------	-------	-------	-------	-------	-------	-------	-------	-------	-------	-------	-------	-------	-------	-------	-------	-------	-------	-------	-------	-------	-------	-------	-------	-------	-------	-------	-------	-------	-------	-------	-------	-------	-------	-------	-------	-------	-------	-------	-------	-------	-------	-------	-------	-------	-------	-------	-------	-------	-------	-------	-------	-------	-------	-------	-------	-------	-------	-------	-------	-------	-------	-------	-------	-------	-------	-------	-------	-------	-------	-------	-------	-------	-------	-------	-------	-------	-------	-------	-------	-------	-------	-------	-------	-------	-------	-------	-------	-------	-------	-------	-------	-------	-------	-------	-------	-------	-------	-------	-------	-------	-------	-------	-------	-------	-------	-------	-------	-------	-------	-------	-------	-------	-------	-------	-------	-------	-------	-------	-------	-------	-------	-------	-------	-------	-------	-------	-------	-------	-------	-------	-------	-------	-------	-------	-------	-------	-------	-------	-------	-------	-------	-------	-------	-------	-------	-------	-------	-------	-------	-------	-------	-------	-------	-------	-------	-------	-------	-------	-------	-------	-------	-------	-------	-------	-------	-------	-------	-------	-------	-------	-------	-------	-------	-------	-------	-------	-------	-------	-------	-------	-------	-------	-------	-------	-------	-------	-------	-------	-------	-------	-------	-------	-------	-------	-------	-------	-------	-------	-------	-------	-------	-------	-------

REF. No	STATION	SIDE	PAYMENT										TOTALS																																																																																																																																																																																																																																																																																																																											
			1-35 T-35	35-55 B-35	55-70 T-50	70-80 E-22	80-90 1-10	90-100 2-10	100-110 3-10	110-120 4-10	120-130 5-10	130-140 6-10																																																																																																																																																																																																																																																																																																																												
1-P	123-95-4	FROM TO	1-10	2-10	3-10	4-10	5-10	6-10	7-10	8-10	9-10	10-10	11-10	12-10	13-10	14-10	15-10	16-10	17-10	18-10	19-10	20-10	21-10	22-10	23-10	24-10	25-10	26-10	27-10	28-10	29-10	30-10	31-10	32-10	33-10	34-10	35-10	36-10	37-10	38-10	39-10	40-10	41-10	42-10	43-10	44-10	45-10	46-10	47-10	48-10	49-10	50-10	51-10	52-10	53-10	54-10	55-10	56-10	57-10	58-10	59-10	60-10	61-10	62-10	63-10	64-10	65-10	66-10	67-10	68-10	69-10	70-10	71-10	72-10	73-10	74-10	75-10	76-10	77-10	78-10	79-10	80-10	81-10	82-10	83-10	84-10	85-10	86-10	87-10	88-10	89-10	90-10	91-10	92-10	93-10	94-10	95-10	96-10	97-10	98-10	99-10	100-10	101-10	102-10	103-10	104-10	105-10	106-10	107-10	108-10	109-10	110-10	111-10	112-10	113-10	114-10	115-10	116-10	117-10	118-10	119-10	120-10	121-10	122-10	123-10	124-10	125-10	126-10	127-10	128-10	129-10	130-10	131-10	132-10	133-10	134-10	135-10	136-10	137-10	138-10	139-10	140-10	141-10	142-10	143-10	144-10	145-10	146-10	147-10	148-10	149-10	150-10	151-10	152-10	153-10	154-10	155-10	156-10	157-10	158-10	159-10	160-10	161-10	162-10	163-10	164-10	165-10	166-10	167-10	168-10	169-10	170-10	171-10	172-10	173-10	174-10	175-10	176-10	177-10	178-10	179-10	180-10	181-10	182-10	183-10	184-10	185-10	186-10	187-10	188-10	189-10	190-10	191-10	192-10	193-10	194-10	195-10	196-10	197-10	198-10	199-10	200-10	201-10	202-10	203-10	204-10	205-10	206-10	207-10	208-10	209-10	210-10	211-10	212-10	213-10	214-10	215-10	216-10	217-10	218-10	219-10	220-10	221-10	222-10	223-10	224-10	225-10	226-10	227-10	228-10	229-10	230-10	231-10	232-10	233-10	234-10	235-10	236-10	237-10	238-10	239-10	240-10	241-10	242-10	243-10	244-10	245-10	246-10	247-10	248-10	249-10	250-10	251-10	252-10	253-10	254-10	255-10	256-10	257-10	258-10	259-10	260-10	261-10	262-10	263-10	264-10	265-10	266-10	267-10	268-10	269-10	270-10	271-10	272-10	273-10	274-10	275-10	276-10	277-10	278-10	279-10	280-10	281-10	282-10	283-10	284-10	285-10	286-10	287-10	288-10	289-10	290-10	291-10	292-10	293-10	294-10	295-10	296-10	297-10	298-10	299-10	300-10	301-10	302-10	303-10	304-10	305-10	306-10	307-10	308-10	309-10	310-10	311-10	312-10	313-10	314-10	315-10	316-10	317-10	318-10	319-10	320-10	321-10	322-10	323-10	324-10	325-10	326
2-A	123-95-3	Lt.	1-10	2-10	3-10	4-10	5-10	6-10	7-10	8-10	9-10	10-10	11-10	12-10	13-10	14-10	15-10	16-10	17-10	18-10	19-10	20-10	21-10	22-10	23-10	24-10	25-10	26-10	27-10	28-10	29-10	30-10	31-10	32-10	33-10	34-10	35-10	36-10	37-10	38-10	39-10	40-10	41-10	42-10	43-10	44-10	45-10	46-10	47-10	48-10	49-10	50-10	51-10	52-10	53-10	54-10	55-10	56-10	57-10	58-10	59-10	60-10	61-10	62-10	63-10	64-10	65-10	66-10	67-10	68-10	69-10	70-10	71-10	72-10	73-10	74-10	75-10	76-10	77-10	78-10	79-10	80-10	81-10	82-10	83-10	84-10	85-10	86-10	87-10	88-10	89-10	90-10	91-10	92-10	93-10	94-10	95-10	96-10	97-10	98-10	99-10	100-10	101-10	102-10	103-10	104-10	105-10	106-10	107-10	108-10	109-10	110-10	111-10	112-10	113-10	114-10	115-10	116-10	117-10	118-10	119-10	120-10	121-10	122-10	123-10	124-10	125-10	126-10	127-10	128-10	129-10	130-10	131-10	132-10	133-10	134-10	135-10	136-10	137-10	138-10	139-10	140-10	141-10	142-10	143-10	144-10	145-10	146-10	147-10	148-10	149-10	150-10	151-10	152-10	153-10	154-10	155-10	156-10	157-10	158-10	159-10	160-10	161-10	162-10	163-10	164-10	165-10	166-10	167-10	168-10	169-10	170-10	171-10	172-10	173-10	174-10	175-10	176-10	177-10	178-10	179-10	180-10	181-10	182-10	183-10	184-10	185-10	186-10	187-10	188-10	189-10	190-10	191-10	192-10	193-10	194-10	195-10	196-10	197-10	198-10	199-10	200-10	201-10	202-10	203-10	204-10	205-10	206-10	207-10	208-10	209-10	210-10	211-10	212-10	213-10	214-10	215-10	216-10	217-10	218-10	219-10	220-10	221-10	222-10	223-10	224-10	225-10	226-10	227-10	228-10	229-10	230-10	231-10	232-10	233-10	234-10	235-10	236-10	237-10	238-10	239-10	240-10	241-10	242-10	243-10	244-10	245-10	246-10	247-10	248-10	249-10	250-10	251-10	252-10	253-10	254-10	255-10	256-10	257-10	258-10	259-10	260-10	261-10	262-10	263-10	264-10	265-10	266-10	267-10	268-10	269-10	270-10	271-10	272-10	273-10	274-10	275-10	276-10	277-10	278-10	279-10	280-10	281-10	282-10	283-10	284-10	285-10	286-10	287-10	288-10	289-10	290-10	291-10	292-10	293-10	294-10	295-10	296-10	297-10	298-10	299-10	300-10	301-10	302-10	303-10	304-10	305-10	306-10	307-10	308-10	309-10	310-10	311-10	312-10	313-10	314-10	315-10	316-10	317-10	318-10	319-10	320-10	321-10	322-10	323-10	324-10	325-10	326
3-B	124-00-0	Lt.	1-10	2-10	3-10	4-10	5-10	6-10	7-10	8-10	9-10	10-10	11-10	12-10	13-10	14-10	15-10	16-10	17-10	18-10	19-10	20-10	21-10	22-10	23-10	24-10	25-10	26-10	27-10	28-10	29-10	30-10	31-10	32-10	33-10	34-10	35-10	36-10	37-10	38-10	39-10	40-10	41-10	42-10	43-10	44-10	45-10	46-10	47-10	48-10	49-10	50-10	51-10	52-10	53-10	54-10	55-10	56-10	57-10	58-10	59-10	60-10	61-10	62-10	63-10	64-10	65-10	66-10	67-10	68-10	69-10	70-10	71-10	72-10	73-10	74-10	75-10	76-10	77-10	78-10	79-10	80-10	81-10	82-10	83-10	84-10	85-10	86-10	87-10	88-10	89-10	90-10	91-10	92-10	93-10	94-10	95-10	96-10	97-10	98-10	99-10	100-10	101-10	102-10	103-10	104-10	105-10	106-10	107-10	108-10	109-10	110-10	111-10	112-10	113-10	114-10	115-10	116-10	117-10	118-10	119-10	120-10	121-10	122-10	123-10	124-10	125-10	126-10	127-10	128-10	129-10	130-10	131-10	132-10	133-10	134-10	135-10	136-10	137-10	138-10	139-10	140-10	141-10	142-10	143-10	144-10	145-10	146-10	147-10	148-10	149-10	150-10	151-10	152-10	153-10	154-10	155-10	156-10	157-10	158-10	159-10	160-10	161-10	162-10	163-10	164-10	165-10	166-10	167-10	168-10	169-10	170-10	171-10	172-10	173-10	174-10	175-10	176-10	177-10	178-10	179-10	180-10	181-10	182-10	183-10	184-10	185-10	186-10	187-10	188-10	189-10	190-10	191-10	192-10	193-10	194-10	195-10	196-10	197-10	198-10	199-10	200-10	201-10	202-10	203-10	204-10	205-10	206-10	207-10	208-10	209-10	210-10	211-10	212-10	213-10	214-10	215-10	216-10	217-10	218-10	219-10	220-10	221-10	222-10	223-10	224-10	225-10	226-10	227-10	228-10	229-10	230-10	231-10	232-10	233-10	234-10	235-10	236-10	237-10	238-10	239-10	240-10	241-10	242-10	243-10	244-10	245-10	246-10	247-10	248-10	249-10	250-10	251-10	252-10	253-10	254-10	255-10	256-10	257-10	258-10	259-10	260-10	261-10	262-10	263-10	264-10	265-10	266-10	267-10	268-10	269-10	270-10	271-10	272-10	273-10	274-10	275-10	276-10	277-10	278-10	279-10	280-10	281-10	282-10	283-10	284-10	285-10	286-10	287-10	288-10	289-10	290-10	291-10	292-10	293-10	294-10	295-10	296-10	297-10	298-10	299-10	300-10	301-10	302-10	303-10	304-10	305-10	306-10	307-10	308-10	309-10	310-10	311-10	312-10	313-10	314-10	315-10	316-10	317-10	318-10	319-10	320-10	321-10	322-10	323-10	324-10	325-10	326
4-B	124-00-1	Lt.	1-10	2-10	3-10	4-10	5-10	6-10	7-10	8-10	9-10	10-10	11-10	12-10	13-10	14-10	15-10	16-10	17-10	18-10	19-10	20-10	21-10	22-10	23-10	24-10	25-10	26-10	27-10	28-10	29-10	30-10	31-10	32-10	33-10	34-10	35-10	36-10	37-10	38-10	39-10	40-10	41-10	42-10	43-10	44-10	45-10	46-10	47-10	48-10	49-10	50-10	51-10	52-10	53-10	54-10	55-10	56-10	57-10	58-10	59-10	60-10	61-10	62-10	63-10	64-10	65-10	66-10	67-10	68-10	69-10	70-10	71-10	72-10	73-10	74-10	75-10	76-10	77-10	78-10	79-10	80-10	81-10	82-10	83-10	84-10	85-10	86-10	87-10	88-10	89-10	90-10	91-10	92-10	93-10	94-10	95-10	96-10	97-10	98-10	99-10	100-10	101-10	102-10	103-10	104-10	105-10	106-10	107-10	108-10	109-10	110-10	111-10	112-10	113-10	114-10	115-10	116-10	117-10	118-10	119-10	120-10	121-10	122-10	123-10	124-10	125-10	126-10	127-10	128-10	129-10	130-10	131-10	132-10	133-10	134-10	135-10	136-10	137-10	138-10	139-10	140-10	141-10	142-10	143-10	144-10	145-10	146-10	147-10	148-10	149-10	150-10	151-10	152-10	153-10	154-10	155-10	156-10																																																																																																																																																																										

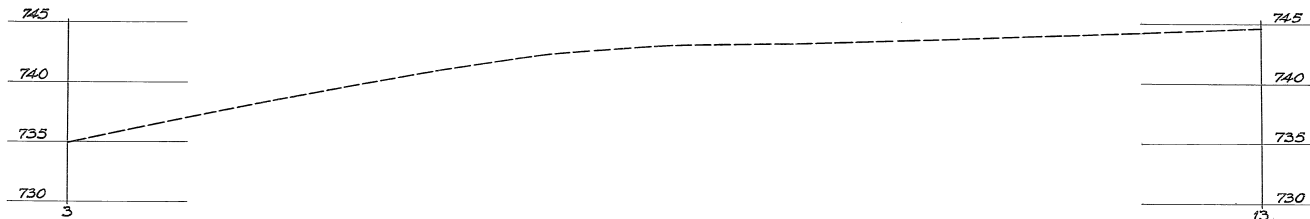
ALIGN. STA. 120+00 TO STA. 130+00

L-9 FERTILIZER = 1.02 TONS  
L-9 SEEDING = 11,325 SQ.YDS.  
EXCAVATION = 774 CU.YDS  
EMBANKMENT = 32,546 CU.YDS  
EMB.+2.0 % = 39,055 CU.YDS  
E-101 COMPACTED SUBGRADE = 6,200 SQ.YDS





TYPICAL SECTION OF ADJOINING PAYEMENT  
(ALUM CREEK DRIVE)  
2 1/2" of T-35 on B-20  
Ohio Project N= S-1206 (3)  
(Under Construction)



NOTE: TABLES SHOWN ON THIS SHEET  
APPLY TO ALIGNMENT SHEET N=24

E-9			TOTAL
SIZE	TREES	STUMPS	
36"-42"	1		1
GRAND TOTAL			1

DRAINAGE & MISCELLANEOUS																				
REF. No	STATION	SIDE	I-1	I-1	I-2	I-2	I-2	I-3	I-3	I-3	I-3	I-4	I-4	I-5	I-8	I-8	I-10	I-15		
			M-6.58 or M-6.4c LIN.FT.	M-6.4c LIN.FT.	CLASS B STORM SEWERS LIN.FT.	CLASS B UNDER PIVNT. LIN.FT.	M-6.4c LIN.FT.	M-6.50 LIN.FT.	M-6.60 LIN.FT.	M-6.65 LIN.FT.	M-6.66 UNDER PIVNT. LIN.FT.	M-6.7b LIN.FT.	M-6.7b LIN.FT.	PIPE OUTLET W-6.4c LIN.FT.	G" BEND	#2-2A CATCH BASIN	#2 MAN- HOLE	SODDINGS	GUARD RAIL	
FROM TO			12"	12"	15"	15"	12"	12"	24"	27"	27"	6"	8"	EACH	EACH	EACH	SQ.YDS.	LIN.FT.		
1-D	130+00	L.F.																		
2-D	130+00	R.M.			60	64														
3-D	130+50	A.C.					70			348	344	32								
4-D	130+50	R.F.																		
5-D	136+00	R.M.		100				100												
6-D	136+30	R.F.	40																	
7-D	130+00	L.F.																		
8-D	130+00	L.F.											472							
9-D	130+00	L.F.											456							
10-D	130+00	R.F.											466							
11-D	134+76	L.F.											472							
12-D	134+60	R.F.											680	2.0	1					
13-D	134+60	L.F.											704	76	1					
14-D	134+76	R.F.											656	24	1					
15-D	141+84	A.C.			92	144														
16-S	132+00	L.F.													1					
17-S	136+30	R.F.															280			
18-S	136+71	L.F.															80			
19-G	130+00	R.F.															68			
20-G	136+25	R.F.																450		
21-G	136+75	L.F.																625		
22-G	140+50	R.F.																325		
TOTALS			40	100	152	288	10	100	348	344	32	4,600	76	4	5	3	424	1,774		

# SUPERELEVATION TABLES

FRANKLIN COUNTY  
COUNTY ROAD NO. 122

SOUTH BOUND LANE			NORTH BOUND LANE		
LEFT EDGE	± PAVEMENT	RIGHT EDGE	STATION & SURVEY	LEFT EDGE	± PAVEMENT
737.14	737.33	737.14	17+49.53	737.14	737.33
737.01	737.21	737.08	+75	737.08	737.28
736.89	737.08	737.04	18+00	737.04	737.23
736.78	736.97	736.98	+25.50	736.98	737.17
736.64	736.83	736.94	+50	736.94	737.13
736.57	736.76	736.92	+61.53	736.92	737.11
736.50	736.70	736.89	+75	736.89	737.11
736.26	736.55	736.84	19+00	736.84	737.10
736.21	736.50	736.79	20+23.53	736.79	737.07
736.18	736.47	736.76	+50 (MS)	736.76	737.05
736.15	736.44	736.73	+75	736.73	737.02
736.13	736.42	736.71	20+00	736.71	737.00
736.12	736.41	736.70	+25	736.70	736.99
736.12	736.41	736.70	+50	736.70	736.99
736.12	736.41	736.70	+75	736.70	736.99
736.14	736.43	736.72	21+00	736.72	737.01
736.16	736.45	736.74	+25	736.74	737.03
736.18	736.47	736.76	+50	736.76	737.05
736.20	736.49	736.78	+75	736.78	737.07
736.22	736.51	736.80	22+00	736.80	737.09
736.24	736.53	736.82	+25	736.82	737.11
736.26	736.55	736.84	+50	736.84	737.13
736.28	736.57	736.86	+75	736.86	737.15
736.30	736.59	736.88	23+00	736.88	737.17
736.32	736.61	736.90	+25	736.90	737.19
736.34	736.63	736.92	+50	736.92	737.21
736.36	736.65	736.94	+75	736.94	737.23
736.38	736.67	736.96	24+00	736.96	737.25
736.40	736.69	736.98	+25	736.98	737.27
736.42	736.71	737.00	+50	737.00	737.29
736.44	736.73	737.02	+75	737.02	737.31
736.46	736.75	737.04	25+00	737.04	737.33
736.48	736.77	737.06	+25	737.06	737.35
736.50	736.79	737.08	+50	737.08	737.37
736.52	736.81	737.10	+75	737.10	737.39
736.54	736.83	737.12	26+00	737.12	737.41
736.56	736.85	737.14	+25	737.14	737.43
736.58	736.87	737.16	+50	737.16	737.45
736.60	736.89	737.18	+75	737.18	737.47
736.62	736.91	737.20	27+00	737.20	737.49
736.64	736.93	737.22	+25	737.22	737.51
736.66	736.95	737.24	+50	737.24	737.53
736.68	736.97	737.26	+75	737.26	737.55
736.70	736.99	737.28	28+00	737.28	737.57
736.72	737.01	737.30	+25	737.30	737.59
736.74	737.03	737.32	+50	737.32	737.61
736.76	737.05	737.34	+75	737.34	737.63
736.78	737.07	737.36	29+00	737.36	737.65
736.80	737.09	737.38	+25	737.38	737.67
736.82	737.11	737.40	+50	737.40	737.69
736.84	737.13	737.42	+75	737.42	737.71
736.86	737.15	737.44	30+00	737.44	737.73
736.88	737.17	737.46	+25	737.46	737.75
736.90	737.19	737.48	+50	737.48	737.77
736.92	737.21	737.50	+75	737.50	737.79
736.94	737.23	737.52	31+00	737.52	737.81
736.96	737.25	737.54	+25	737.54	737.83
736.98	737.27	737.56	+50	737.56	737.85
737.00	737.29	737.58	+75	737.58	737.87
737.02	737.31	737.60	32+00	737.60	737.89
737.04	737.33	737.62	+25	737.62	737.91
737.06	737.35	737.64	+50	737.64	737.93
737.08	737.37	737.66	+75	737.66	737.95
737.10	737.39	737.68	33+00	737.68	737.97
737.12	737.41	737.70	+25	737.70	737.99
737.14	737.43	737.72	+50	737.72	738.01
737.16	737.45	737.74	+75	737.74	738.03
737.18	737.47	737.76	34+00	737.76	738.05

SOUTH BOUND LANE			NORTH BOUND LANE		
LEFT EDGE	± PAVEMENT	RIGHT EDGE	STATION & SURVEY	LEFT EDGE	± PAVEMENT
737.20	737.49	737.78	34+65	737.78	738.07
737.22	737.51	737.80	+50	737.80	738.09
737.24	737.53	737.82	+75	737.82	738.11
737.26	737.55	737.84	35+00	737.84	738.13
737.28	737.57	737.86	+25	737.86	738.15
737.30	737.59	737.88	+50	737.88	738.17
737.32	737.61	737.90	+75	737.90	738.19
737.34	737.63	737.92	36+00	737.92	738.21
737.36	737.65	737.94	+25	737.94	738.23
737.38	737.67	737.96	+50	737.96	738.25
737.40	737.69	737.98	+75	737.98	738.27
737.42	737.71	738.00	37+00	738.00	738.29
737.44	737.73	738.02	+25	738.02	738.31
737.46	737.75	738.04	+50	738.04	738.33
737.48	737.77	738.06	+75	738.06	738.35
737.50	737.79	738.08	38+00	738.08	738.37
737.52	737.81	738.10	+25	738.10	738.39
737.54	737.83	738.12	+50	738.12	738.41
737.56	737.85	738.14	+75	738.14	738.43
737.58	737.87	738.16	39+00	738.16	738.45
737.60	737.89	738.18	+25	738.18	738.47
737.62	737.91	738.20	+50	738.20	738.49
737.64	737.93	738.22	+75	738.22	738.51
737.66	737.95	738.24	40+00	738.24	738.53
737.68	737.97	738.26	+25	738.26	738.55
737.70	737.99	738.28	+50	738.28	738.57
737.72	738.01	738.30	+75	738.30	738.59
737.74	738.03	738.32	41+00	738.32	738.61
737.76	738.05	738.34	+25	738.34	738.63
737.78	738.07	738.36	+50	738.36	738.65
737.80	738.09	738.38	+75	738.38	738.67
737.82	738.11	738.40	42+00	738.40	738.69
737.84	738.13	738.42	+25	738.42	738.71
737.86	738.15	738.44	+50	738.44	738.73
737.88	738.17	738.46	+75	738.46	738.75
737.90	738.19	738.48	43+00	738.48	738.77
737.92	738.21	738.50	+25	738.50	738.79
737.94	738.23	738.52	+50	738.52	738.81
737.96	738.25	738.54	+75	738.54	738.83
737.98	738.27	738.56	44+00	738.56	738.85
738.00	738.29	738.58	+25	738.58	738.87
738.02	738.31	738.60	+50	738.60	738.89
738.04	738.33	738.62	+75	738.62	738.91
738.06	738.35	738.64	45+00	738.64	738.93
738.08	738.37	738.66	+25	738.66	738.95
738.10	738.39	738.68	+50	738.68	738.97
738.12	738.41	738.70	+75	738.70	738.99
738.14	738.43	738.72	46+00	738.72	739.01
738.16	738.45	738.74	+25	738.74	739.03
738.18	738.47	738.76	+50	738.76	739.05
738.20	738.49	738.78	+75	738.78	739.07
738.22	738.51	738.80	47+00	738.80	739.09
738.24	738.53	738.82	+25	738.82	739.11
738.26	738.55	738.84	+50 (MS)	738.84	739.13
738.28	738.57	738.86	+75	738.86	739.15
738.30	738.59	738.88	48+00	738.88	739.17
738.32	738.61	738.90	+25	738.90	739.19
738.34	738.63	738.92	+50	738.92	739.21
738.36	738.65	738.94	+75	738.94	739.23
738.38	738.67	738.96	49+00	738.96	739.25
738.40	738.69	738.98	+25	738.98	739.27
738.42	738.71	739.00	+50	739.00	739.29
738.44	738.73	739.02	+75	739.02	739.31
738.46	738.75	739.04	50+00	739.04	739.33
738.48	738.77	739.06	+25	739.06	739.35
738.50	738.79	739.08	+50	739.08	739.37
738.52	738.81	739.10	+75	739.10	739.39
738.54	738.83	739.12	51+00	739.12	739.41
738.56	738.85	739.14	+25	739.14	739.43
738.58	738.87	739.16	+50	739.16	739.45
738.60	738.89	739.18	+75	739.18	739.47
738.62	738.91	739.20	52+00	739.20	739.49
738.64	738.93	739.22	+25	739.22	739.51
738.66	738.95	739.24	+50	739.24	739.53
738.68	738.97	739.26	+75	739.26	739.55
738.70	738.99	739.28	53+00	739.28	739.57
738.72	739.01	739.30	+25	739.30	739.59
738.74	739.03	739.32	+50	739.32	739.61
738.76	739.05	739.34	+75	739.34	739.63
738.78	739.07	739.36	54+00	739.36	739.65
738.80	739.09	739.38	+25	739.38	739.67
738.82	739.11	739.40	+50	739.40	739.69
738.84	739.13	739.42	+75	739.42	739.71
738.86	739.15	739.44	55+00	739.44	739.73
738.88	739.17	739.46	+25	739.46	739.75
738.90	739.19	739.48	+50	739.48	739.77
738.92	739.21	739.50	+75	739.50	739.79
738.94	739.23	739.52	56+00	739.52	739.81
738.96	739.25	739.54	+25	739.54	739.83
738.98	739.27	739.56	+50	739.56	739.85
739.00	739.29	739.58	+75	739.58	739.87
739.02	739.31	739.60	57+25 (MS)	739.60	739.89
739.04	739.33	739.62	+25	739.62	739.91
739.06	739.35	739.64	+50	739.64	739.93
739.08	739.37	739.66	+75	739.66	739.95
739.10	739.39	739.68	58+00	739.68	739.97
739.12	739.41	739.70	+25	739.70	739.99
739.14	739.43	739.72	+50	739.72	740.01
739.16	739.45	739.74	+75	739.74	740.03
739.18	739.47	739.76	59+00	739.76	740.05

SOUTH BOUND LANE			De = 1'-0.00' S = 0.024	NORTH BOUND LANE		
LEFT EDGE	± PAVEMENT	RIGHT EDGE	STATION & SURVEY	LEFT EDGE	± PAVEMENT	RIGHT EDGE
738.56	738.75	738.56	55+23.50	738.56	738.75	738.56
738.61	738.76	738.52	+50	738.52	738.62	738.63
738.65	738.68	738.48	+75	738.48	738.50	738.31
738.69	738.64	738.44	+98.50	738.44	738.37	738.07
738.73	738.60	738.40	56+25	738.40	738.26	738.07
738.75	738.58	738.38	+36.50	738.38	738.19	738.05
738.78	738.55	738.34	+50	738.36	738.14	737.94
738.82	738.58	738.32	+75	738.32	738.07	737.82
738.85	738.57	738.28	PC +98.50	738.28	737.99	737.75
738.82	738.53	738.24	57+25 (MS)	738.24	737.95	737.66
738.78	738.49	738.20	+50	738.20	737.91	737.62
738.74	738.45	738.16	+75	738.16	737.87	737.58
738.70	738.41	738.12	58+00	738.12	737.83	737.54
738.66	738.37	738.08	+25	738.08	737.79	737.50
738.62	738.33	738.04	+50	738.04	737.75	737.46
738.58	738.29	738.00	+75	738.00	737.71	737.42
738.54	738.25	737.96	59+00	737.96	737.67	737.38
738.50	738.21	737.92	+25	737.92	737.63	737.34
738.46	738.17	737.88	+50	737.88	737.59	737.30
738.42	738.13	737.84	+75	737.84	737.55	737.26
738.38	738.09	737.80	60+00	737.80	737.51	737.22
738.34	738.05	737.76	+25	737.76	737.47	737.17
738.30	738.01	737.72	+50	737.72	737.43	737.14
738.26	737.97	737.68	+75	737.68	737.39	737.10
738.22	737.93	737.64	61+00	737.64	737.35	737.06
738.18	737.89	737.60	+25	737.60	737.31	737.02
738.14	737.85	737.56	+50	737.56	737.27	736.98
738.10	737.81	737.52	+75	737.52	737.23	736.94
738.06	737.77	737.48	62+00	737.48	737.19	736.90
738.02	737.73	737.44	+25	737.44	737.15	736.86
737.98	737.69	737.40	+50	737.40	737.11	736.82
737.94	737.65	737.36	+75	737.36	737.07	736.78
737.90	737.61	737.32	63+00	737.32	737.03	736.74
737.87	737.58	737.29	+25	737.29	737.00	736.71
737.84	737.55	737.26	+50	737.26	736.97	736.68
737.81	737.52	737.23	+75	737.23	736.94	736.65
737.83	737.54	737.25	64+00	737.25	736.96	736.66
737.84	737.55	737.26	+25	737.26	736.97	736.68
737.86	737.57	737.28	+50	737.28	736.99	736.70
737.90	737.61	737.32	+75	737.32	737.03	736.74
737.94	737.65	737.36	65+00	737.36	737.07	736.78
737.99	737.70	737.41	+25	737.41	737.12	736.83
738.04	737.75	737.46	+50	737.46	737.17	736.86
738.09	737.80	737.51	+75	737.51	737.22	736.93
738.14	737.85	737.56	66+00	737.56	737.27	736.98
738.19	737.90	737.61	+25	737.61	737.32	737.03
738.24	737.95	737.66	+50	737.66	737.37	737.06
738.29	738.00	737.71	+75	737.71	737.42	737.13
738.34	738.05	737.76	67+00	737.76	737.47	737.18
738.39	738.10	737.81	+25	737.81	737.52	737.23
738.44	738.15	737.86	+50	737.86	737.57	737.28
738.49	738.20	737.91	+75	737.91	737.62	737.33
738.54	738.25	737.96	68+00	737.96	737.67	737.38
738.59	738.30	738.01	+25	738.01	737.72	737.43
738.64	738.35	738.06	+50	738.06	737.77	737.48
738.69	738.40	738.11	+75	738.11	737.82	737.53
738.74	738.45	738.16	69+00	738.16	737.87	737.58
738.79	738.50	738.21	+25	738.21	737.92	737.63
738.84	738.55	738.26	+50	738.26	737.97	737.68
738.89	738.60	738.31	+75	738.31	738.02	737.73
738.94	738.65	738.36	70+00	738.36	738.07	737.78
738.99	738.70	738.41	+25	738.41	738.12	737.83
739.04	738.75	738.46	+50	738.46	738.17	737.88
739.09	738.80	738.51	+75	738.51	738.22	737.93
739.14	738.85	738.56	71+00	738.56	738.27	737.98
739.19	738.90	738.61	+25	738.61	738.32	738.03
739.24	738.95	738.66	+50	738.66	738.37	738.08
739.29	738.00	738.71	+75	738.71	738.42	738.13

## 67

FED. RD. DIVISION	STATE	PROJECT	
2	OHIO		

Dc = 1°-30' S = 0.036		NORTH BOUND LANE		
STATION ± SURVEY	LEFT EDGE	± PAVEMENT	RIGHT EDGE	
108+72.22	730.45	730.84	730.65	
109+00	730.56	730.65	730.45	
+25	730.48	730.46	730.28	
T.S. +74.22	730.41	730.31	730.12	
+68.22	730.36	730.21	730.02	
+75	730.32	730.12	729.93	
+77.22	730.31	730.10	729.91	
+85.22	730.29	730.05	729.86	
+92.22	730.27	730.01	729.80	
110+00	730.24	729.97	729.75	
+107.22	730.12	729.85	729.70	
+122.22	730.17	729.85	729.60	
+25	730.16	729.84	729.58	
+31.22	730.13	729.79	729.49	
+50	730.08	729.73	729.40	
+56.22	730.07	729.72	729.38	
+67.22	730.03	729.65	729.29	
+75	730.00	729.61	729.23	
+82.22	729.98	729.58	729.18	
S.C. +97.22	729.93	729.50	729.09	
111+25 (M.S.)	729.84	729.41	728.98	
+50	729.76	729.33	728.90	
+75	729.68	729.25	728.82	
112+00	729.60	729.17	728.74	
+25	729.52	729.09	728.66	
+50	729.44	729.01	728.58	
+75	729.36	728.93	728.50	
113+00	729.28	728.85	728.42	
+25	729.20	728.77	728.34	
+50	729.12	728.69	728.26	
+75	729.04	728.61	728.18	
114+00	728.96	728.53	728.10	
+25	728.88	728.45	728.02	
+50	728.80	728.37	727.94	
+75	728.72	728.29	727.86	
115+00	728.64	728.21	727.78	
+25	728.56	728.13	727.70	
+50	728.48	728.05	727.62	
+75	728.40	727.97	727.54	
116+00	728.32	727.89	727.46	
+25	728.24	727.81	727.38	
+50	728.16	727.73	727.30	
+75	728.08	727.65	727.22	
117+00	728.00	727.57	727.14	
+25	727.92	727.49	727.06	
+50	727.84	727.41	726.98	
+75	727.76	727.33	726.90	
118+00	727.68	727.25	726.82	
+25	727.60	727.17	726.74	
+50	727.52	727.09	726.66	
+75	727.44	727.01	726.58	
119+00	727.36	726.93	726.50	
+25	727.28	726.85	726.42	
+50	727.20	726.77	726.34	
+75	727.12	726.69	726.26	
120+00	727.04	726.61	726.18	
+120.22 (M.S.)	726.96	726.53	726.10	
G.S. +35	726.93	726.50	726.07	
+50	726.88	726.48	726.08	
+65	726.83	726.46	726.09	
+80	726.78	726.43	726.10	
+95	726.73	726.41	726.11	
121+10	726.68	726.39	726.12	
+25	726.63	726.37	726.13	
+40	726.58	726.35	726.14	
+55	726.54	726.34	726.15	
+70	726.50	726.35	726.16	
S.T. +85	726.45	726.36	726.17	
122+00	726.40	726.37	726.18	
+25	726.32	726.38	726.19	
+50	726.28	726.40	726.21	
+60	726.24			

0060	010	Superclerical Tables	1958	0270	010
------	-----	----------------------	------	------	-----

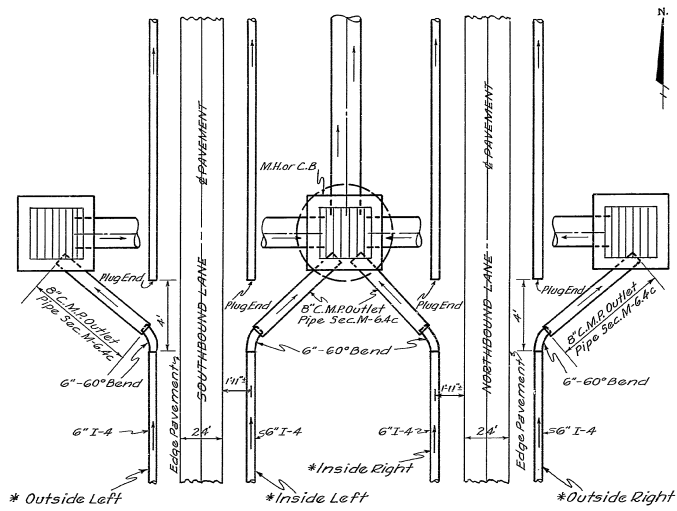




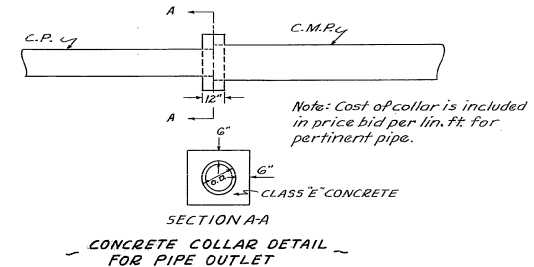
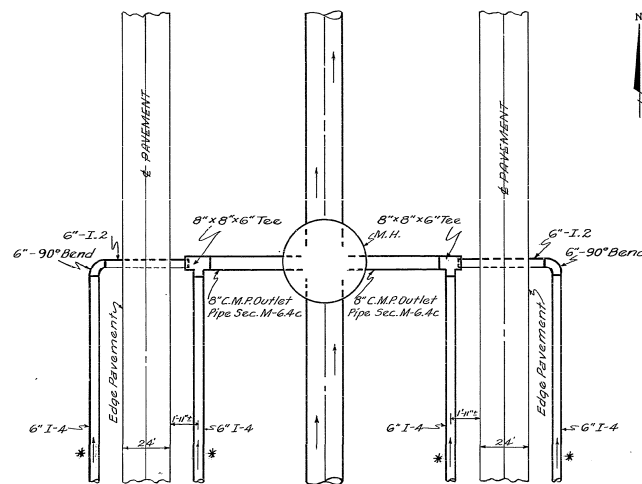
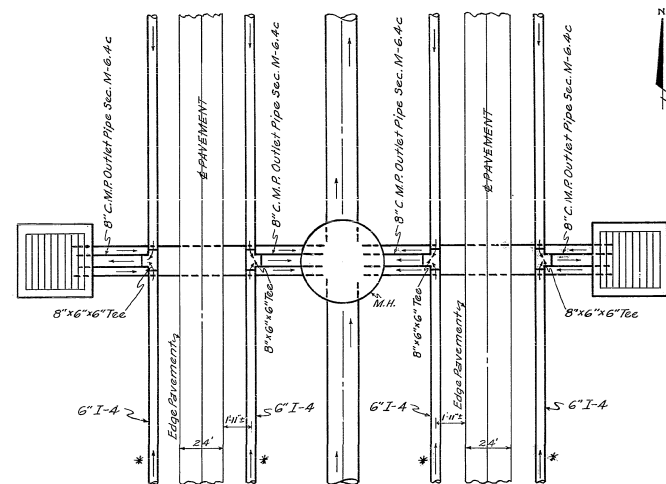
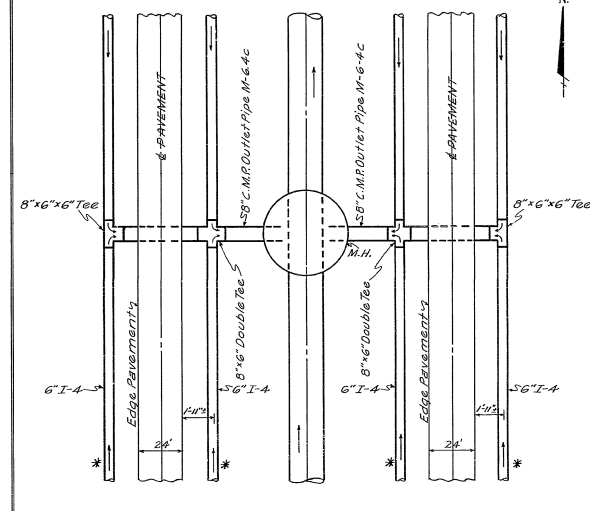
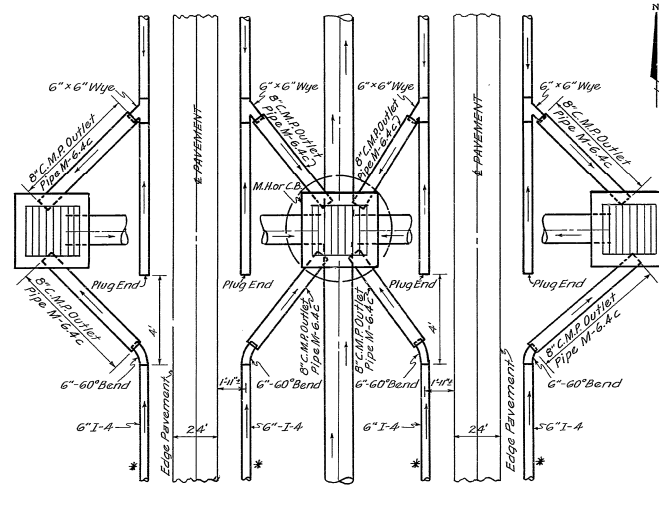
# DETAILS I-4 UNDERDRAINS

FFA RD DIVISION	STATE	PROJECT	69
2	OHIO		

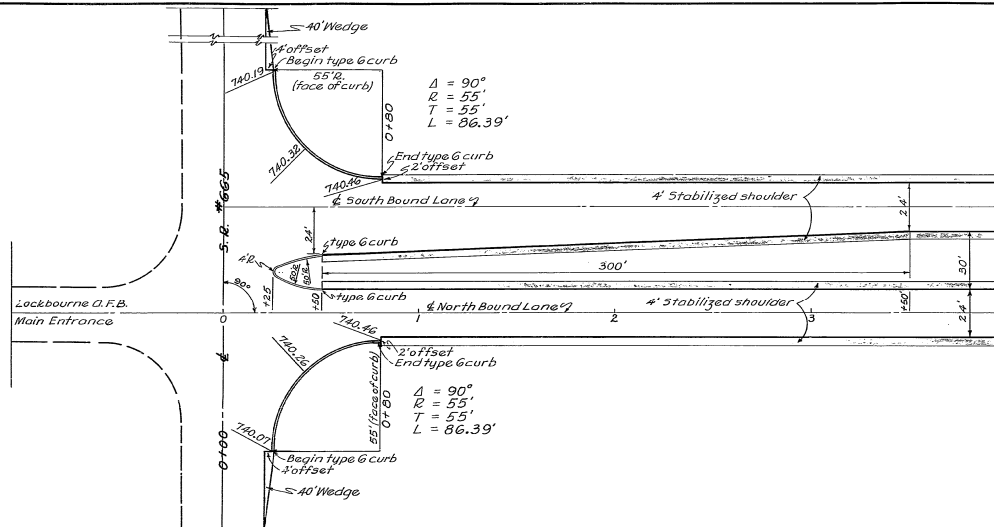
FRANKLIN COUNTY  
COUNTY ROAD #122



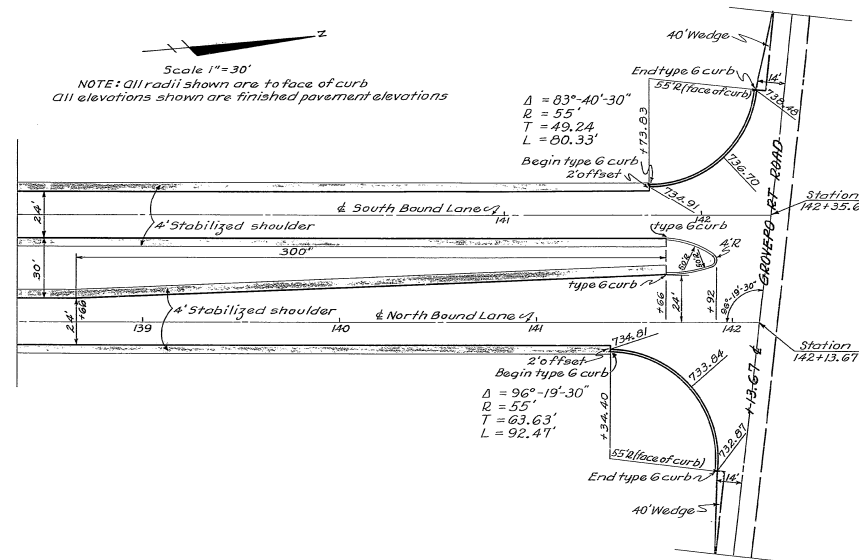
\* IDENTIFICATION FOR I-4 UNDERDRAINS



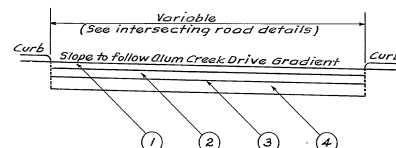
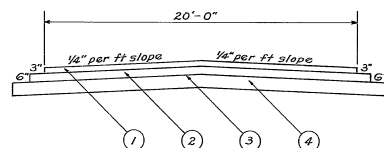
0000 010 0200 0300 0400 0500 0600 0700 0800 0900 1000 1100 1200 1300 1400 1500 1600 1700 1800 1900 2000 2100 2200 2300 2400 2500 2600 2700 2800 2900 3000 3100 3200 3300 3400 3500 3600 3700 3800 3900 4000 4100 4200 4300 4400 4500 4600 4700 4800 4900 5000 5100 5200 5300 5400 5500 5600 5700 5800 5900 6000 6100 6200 6300 6400 6500 6600 6700 6800 6900 7000 7100 7200 7300 7400 7500 7600 7700 7800 7900 8000 8100 8200 8300 8400 8500 8600 8700 8800 8900 9000 9100 9200 9300 9400 9500 9600 9700 9800 9900 10000



Scale 1"=30'  
NOTE: All radii shown are to face of curb  
All elevations shown are finished pavement elevations

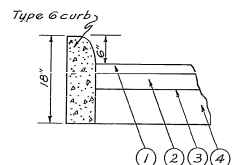


NOTE: SECTIONS ARE NOT TO SCALE

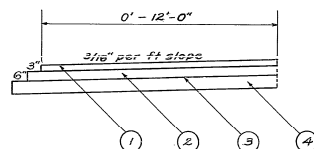


SECTION FOR CROSSOVER  
AT DRIVEWAYS

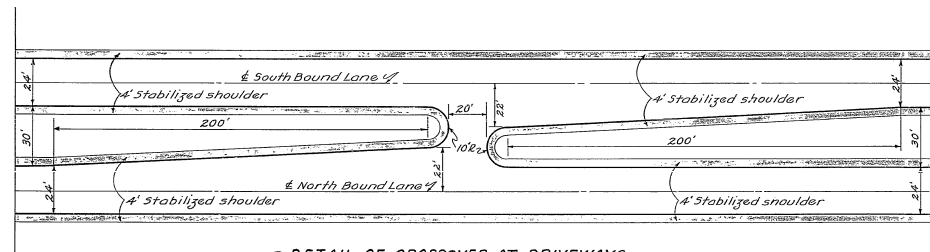
SECTION FOR CROSSOVER  
AT INTERSECTING ROADS



Pavement Edge Finish  
At Median Curb



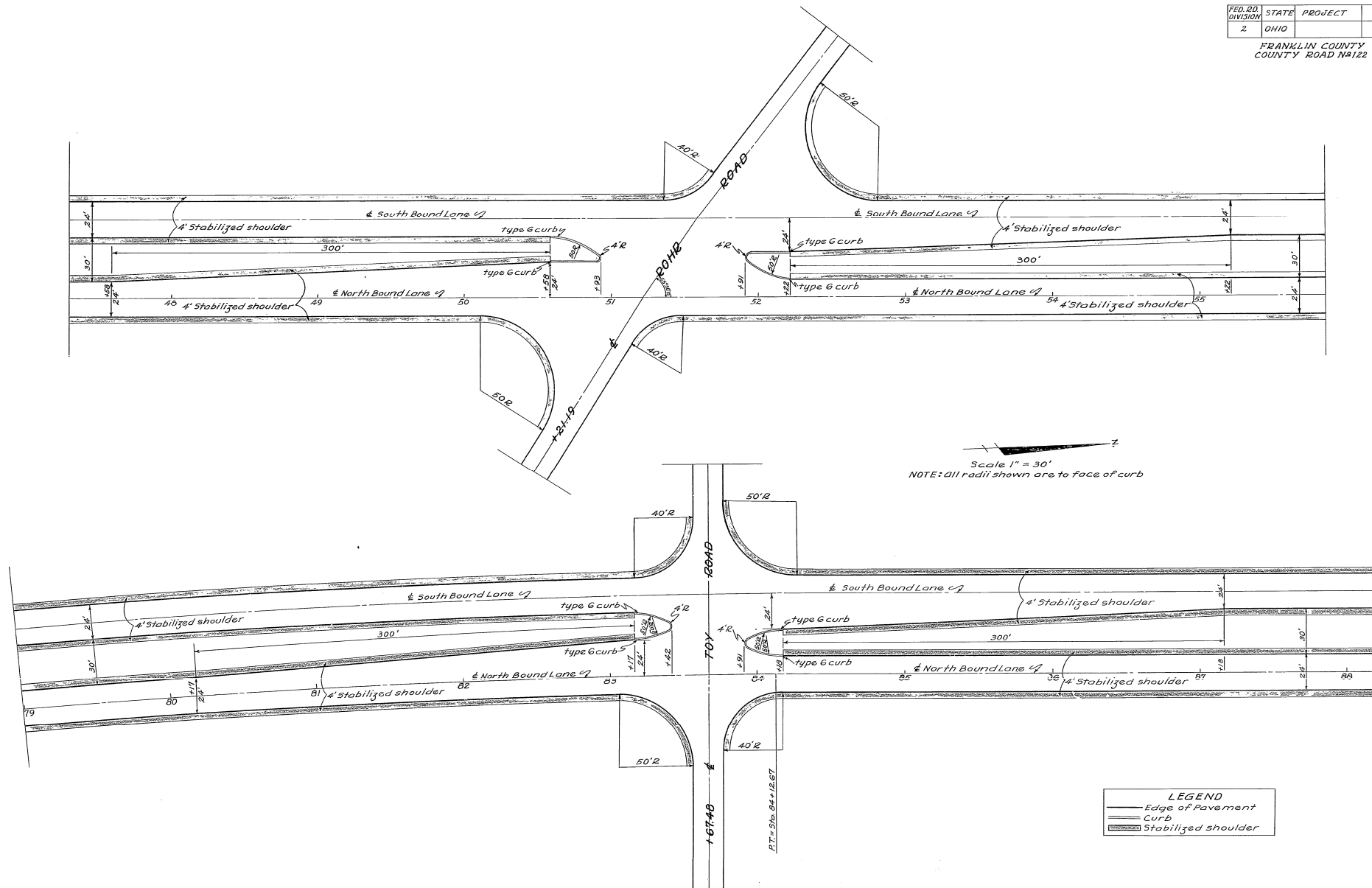
SECTION FOR PAVEMENT TAPER

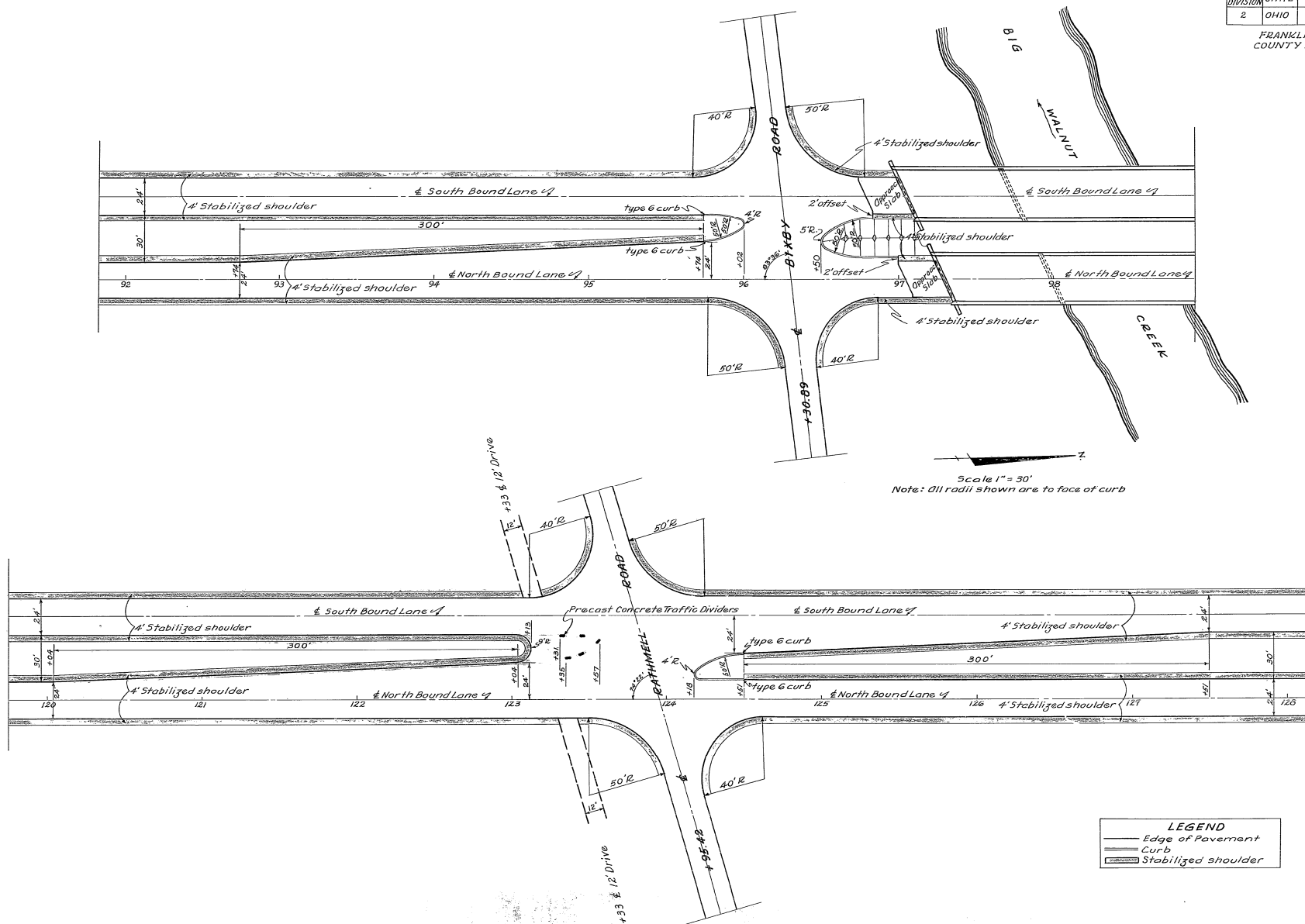


DETAIL OF CROSSOVER AT DRIVEWAYS

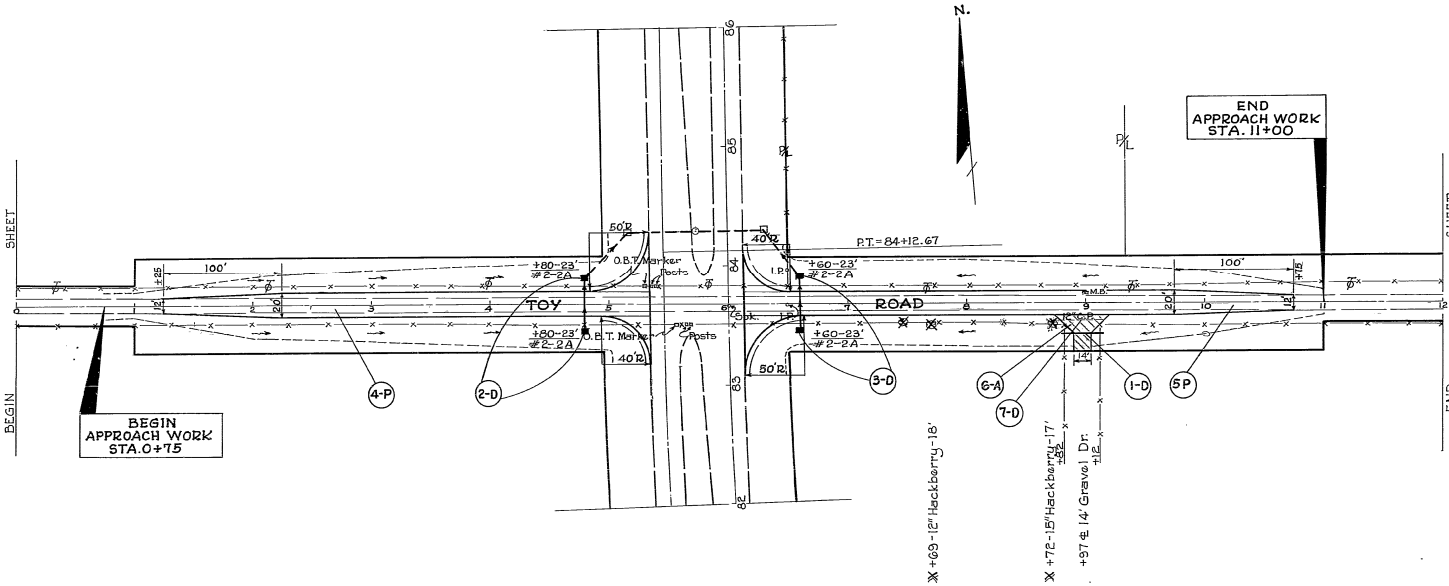
LEGEND	
	Edge of Pavement
	Curb
	Stabilized shoulder

- |   |   |           |
|---|---|-----------|
| 1 | 1 1/2" Asphaltic Concrete Surface Course Type A (70-85)   | Item T-35 |
| 2 | 2 1/2" Asphaltic Concrete Leveling Course (70-85)   | Item B-35 |
| 3 | Bituminous Prime Coat, using Sec. M-57, RT-2 or RT-3 or Sec. M-53, MC-0 or MC-1, applied at the rate of 0.35 gal. per Sq. Yd. | Item T-30 |
| 4 | 8" Sub Base, Grading A or B, as per plan  | Item I-22 |







[illegible]

FED. RD. DIVISION	STATE	PROJECT	
2	OHIO		

FRANKLIN COUNTY  
COUNTY ROAD Nº 122

(79)

# Total I-18 = 15 + 12 = 27 Cu. Yds.

E-9		TOTAL
SIZE	TREES STUMPS	
12'-18"	2	2
GRAND TOTAL		2











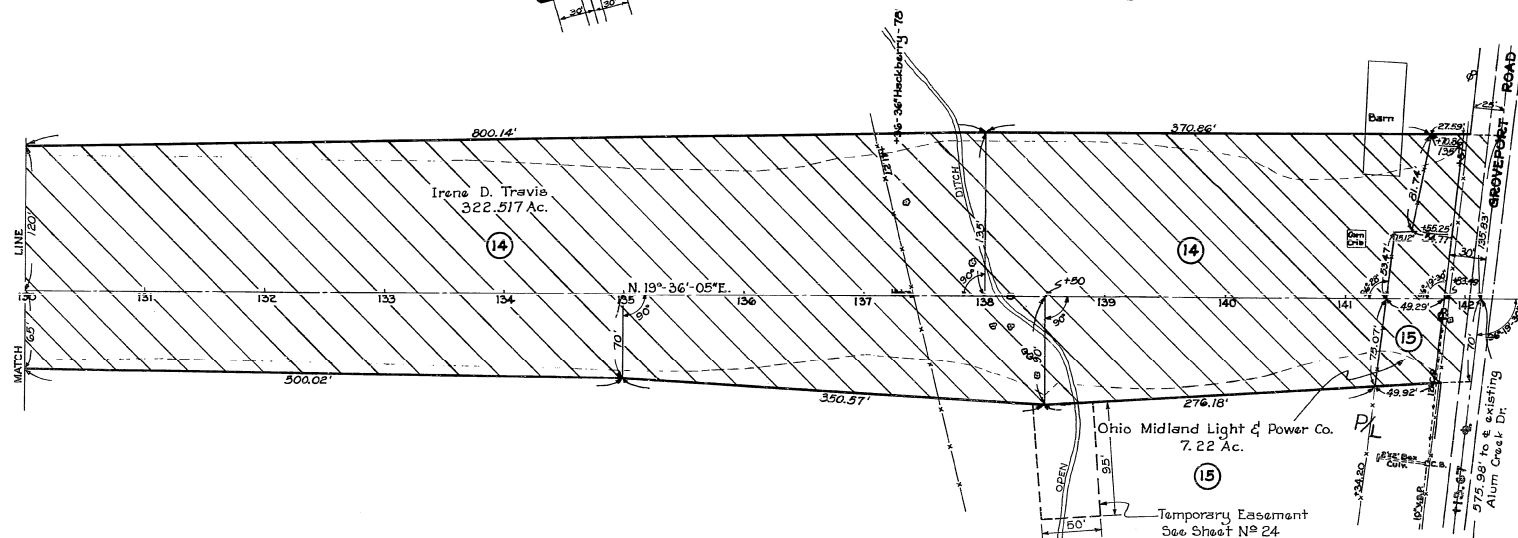
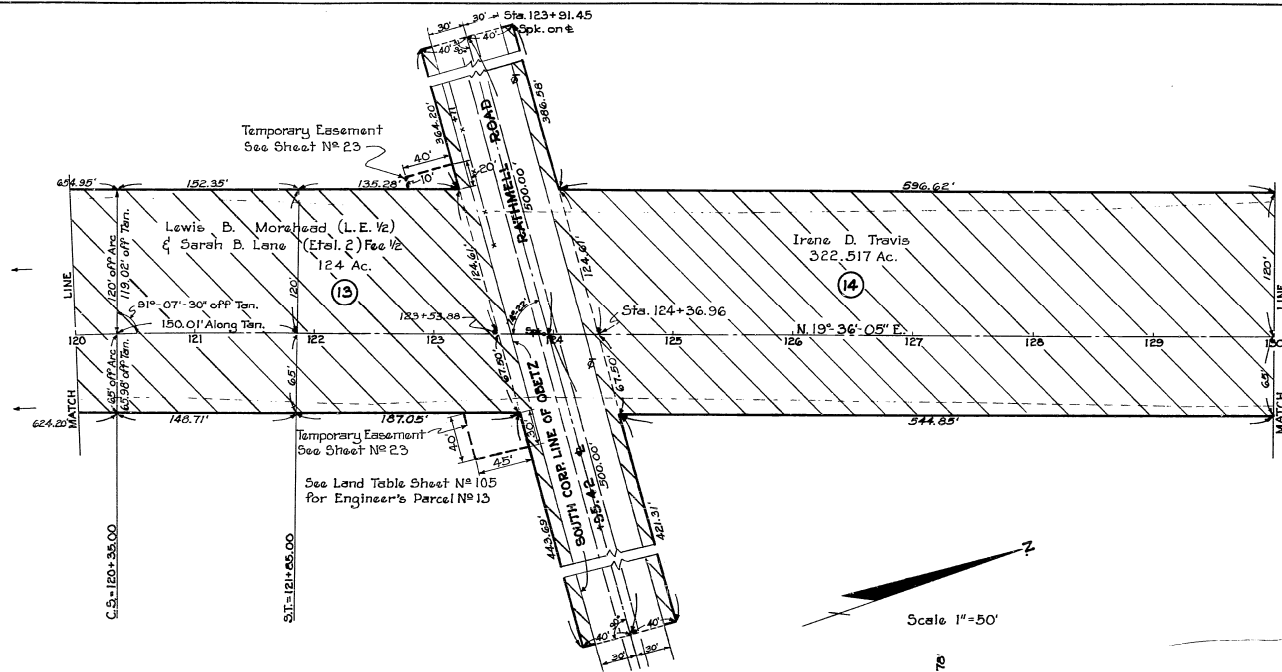








FRANKLIN COUNTY  
COUNTY ROAD NO 122



## LAND APPROPRIATION TABLE

LAND APPROPRIATION TABLE						
AUDITORS PARCEL No	ENGINEER'S PARCEL No	OWNERS NAME	MORTGAGEE	ACRES OWNED DUPLICATE	ACRES TO BE APPROP.	RODS OF FRONTAGE
(9)	14	1.4300 D. Travis		322.517	8.034	259
158	15	Ohio Midland Light & Power Co.		7.22	*0.344	5

\* Includes 0.143 Ac. in existing R/W of Groveport Rd.